



# TARGA NZ

25<sup>th</sup> – 29<sup>th</sup> May 2022

---

## SERVICE BOOK

---

---

# Service Crew Information

---

Welcome to all Service Crews of Targa NZ 2021. Targa NZ wishes you a safe and enjoyable event.

Detailed in this **Service Book** is important information regarding Targa NZ that we ask all Crews to be familiar with.

Please remember that at all times while on the event you represent not only your competing vehicle but also Targa NZ, and for this reason we ask that you please abide by all Targa rules and regulations and especially the traffic laws of New Zealand.

Your co-operation will enable Targa NZ to maintain our reputation and ensures that we continue to receive public support for the event.

## **Service Book Instructions:**

- These instructions have been taken from “Google Maps” and therefore may not be exact.
- Only “obvious” intersections, or road signage are shown in the Service Book. i.e. not all intersections are shown in the Service Book.
- Maps of Service Stops are included in the Service Book.

## **Service Vehicle Identification:**

- All Service Vehicles are required to display the “Service Vehicle” decal at all times during Targa NZ 2021.
- This decal shall be affixed to the outside of the front windscreen on the passenger side of each service vehicle.
- This decal is required to access Service Parks.

## **THE GOLDEN RULES FOR EVERYONE FOR COVID-19 CHANGES IF NEEDED**

- Wear a mask when you are in enclosed areas.
- If you’re sick, stay home. Don’t participate in this event. Don’t socialise.
- If you have cold or flu symptoms call your doctor or Healthline and make sure you get tested.
- If you are told by health authorities to self-isolate, you must do so immediately.
- Targa NZ is helping you keep track of your movements by displaying the Ministry of Health QR Code for contact tracing within this Service Book. Keep track of where you’ve been and who you’ve seen to help contact tracing if needed.
- People should be prepared to act fast to step up Alert Levels if we have to.

## **Targa NZ has the NZ COVID TRACER app available at all venues.**

Search **NZ COVID Tracer** app now :



---

# Servicing

---

Servicing **must only** occur at the designated Service Stops as described in the maps and written notes in this Service Book.

Servicing outside these designated service areas is prohibited and competitors will be penalised as per the Supplementary Regulations.

Officials will be patrolling the event to enforce this.

Competitors obtaining fuel supplies in service stations are not deemed as “servicing outside the service area”.

When entering a Service Stop, please ensure the entrance is kept clear as at times there may only be one entry & exit point.

Where a Service Stop is on a public roadside, please ensure you remain courteous to the surrounding businesses and driveways.

**Please ensure drop sheets are used when servicing.**

The service time as noted in the instructions is a guide only and will vary for each competitor. A slower competitor may have less time for servicing, than a faster competitor. The amount of servicing will also be affected by any hold ups in the touring stages.

As Lunch Service Stops are re-groups, these may be shortened where necessary or if the event starts to run late.

---

# Fuel

---

Fuel is available along the Targa route; however, it is the competitor's responsibility to obtain their fuel supplies.

No Service Stations have been requested to stay open for Targa NZ; an indication of a Service Station in the Road Book does not necessarily mean that that station will be open.

There are currently three suppliers of 98 Octane in New Zealand, BP, Mobil and Gull:

- To locate a BP Service Station go to [www.bpfinder.co.nz](http://www.bpfinder.co.nz)
- To locate a Mobil Service Station go to [www.mobilfuelfinder.co.nz](http://www.mobilfuelfinder.co.nz)
- To locate a Gull Service Station go to [www.gull.co.nz](http://www.gull.co.nz)

Please be aware of the fuel handling policy as set out by AASA.

Please note that it is the Competitors responsibility to ensure that they have sufficient fuel to undertake the event. Therefore, if you require fuel outside the scheduled refuel stops at the lunch service and end of day service then you will need to coordinate with your crew or schedule a fuel stop at a Service Station on route which is permitted within the rules of the event.

---

# Traffic Laws

---

Throughout the entire rally (with the exception of special stages), the crews must strictly observe the traffic laws of New Zealand.

In particular;

- (a) Competitors and their service crews must always drive and conduct themselves in a manner which does not discredit the event or arouse adverse public opinion.
- (b) All traffic regulations and particularly speed limits must be complied with on all road sections.

Competitors and service crews shall be held entirely responsible for any accident or breach of the laws in which they may be involved and shall declare to the Clerk of the Course particulars of any accident involving damage to property or injury from which liability may arise and shall indemnify the organisers in regard to any liability.

---

# Itinerary

---

## Competitor & Service Crew Briefing:

Covid Level dependent

**Date:** Tuesday 24<sup>th</sup> May

**Time:** 4:30pm

**Venue:** Taranaki Racing Club, New Plymouth – Beside the TSB Stadium Carpark

## Pre-Start Car Park: Competition Vehicles

**Venue:** TSB Stadium Carpark, New Plymouth

## Prize Giving Function:

Toitoti, 109 Hastings St South, Hastings

Dinner 6pm Prizegiving 6:30pm.

## Leg One – Wednesday 25<sup>th</sup> May

- First car starts from the TSB Stadium, New Plymouth at 7:00am and finishes at 5:50pm at the TSB Stadium New Plymouth.
- Five (5) Special Stages totalling 169.85km.
- Overnight Parc Ferme at the TSB Stadium

## Leg Two – Thursday 26<sup>th</sup> May

- First car starts from the TSB Stadium, New Plymouth at 8:20am and finishes at 5:40pm back at the TSB Stadium.
- Five (5) Special Stages totalling 157.05km.
- Overnight Parc Ferme at the TSB Stadium

## Leg Three – Friday 27<sup>th</sup> May

- First car starts from the TSB Stadium at 8:20am and finishes at 4:50pm outside of the Whanganui War Memorial Centre.
- Seven (7) Special Stages totalling 116.66km.
- Overnight Parc Ferme at the Whanganui War Memorial Centre.

## Leg Four – Saturday 28<sup>th</sup> May

- First car starts from the Whanganui War Memorial Centre at 8:00am and finishes at 2:55pm at Martin Place, Havelock North.
- Six (6) Special Stages totalling 142.80km.
- Overnight Parc Ferme at Martin Place, Havelock North

## Leg Five – Sunday 29<sup>th</sup> May

- First car starts from Martin Place at 8:00am and finishes at 4:20pm at the final control situated at Napier Rd, Havelock North.
- Five (5) Special Stages totalling 172.93km.
- No overnight Parc Ferme

<b>Total Stage kms: (approx.)</b>	<b>759.29 km</b>
<b>Total Touring kms: (approx.)</b>	<b>1240.12 km</b>

---

## Important Phone Numbers

---

Official	Name	Contact Number
Clerk of Course	Wayne Barnard	027 434 1156
Competitor Relations Officer	Jim Scott	021 811 787
Secretariat	Victoria Main	021 525 643
Scrutineer	Troy Twomey	021 469 444
Chief Medical Officer	Simon Gibb	027 410 6080
Media Manager	Ross Mackay	021 677 919
RallySafe	Graham Buchanan	027 497 5675

---

**TARGA NZ**  
**EMERGENCY NUMBER**  
**0800 827 427**

---

---

# Official Notice Board

---

The Official Notice Board will be positioned with the Secretariat unless otherwise stated.

**The Secretariat, Scrutineer & CRO will be located at:**

## **Leg 1 – Wednesday 25<sup>th</sup> May**

Start of Leg: ***TSB Stadium, New Plymouth***

Service & Lunch: ***Te Kuiti Domain***

End of Leg: ***TSB Stadium, New Plymouth***

## **Leg 2 – Thursday 26<sup>th</sup> May**

Start of Leg: ***TSB Stadium, New Plymouth***

Service & Lunch: ***Whangamomona Hall***

End of Leg: ***TSB Stadium, New Plymouth***

## **Leg 3 – Friday 27<sup>th</sup> May**

Start of Leg: ***TSB Stadium, New Plymouth***

Service & Lunch: ***Stratford War Memorial Centre***

End of Leg: ***Whanganui War Memorial Centre***

## **Leg 4 – Saturday 28<sup>th</sup> May**

Start of Leg: ***Whanganui War Memorial Centre***

Service & Lunch: ***Memorial Park, Taihape***

End of Leg: ***Martin Place, Havelock North***

## **Leg 5 – Sunday 29<sup>th</sup> May**

Start of Leg: ***Martin Place, Havelock North***

Service & Lunch: ***Martin Place, Havelock North***

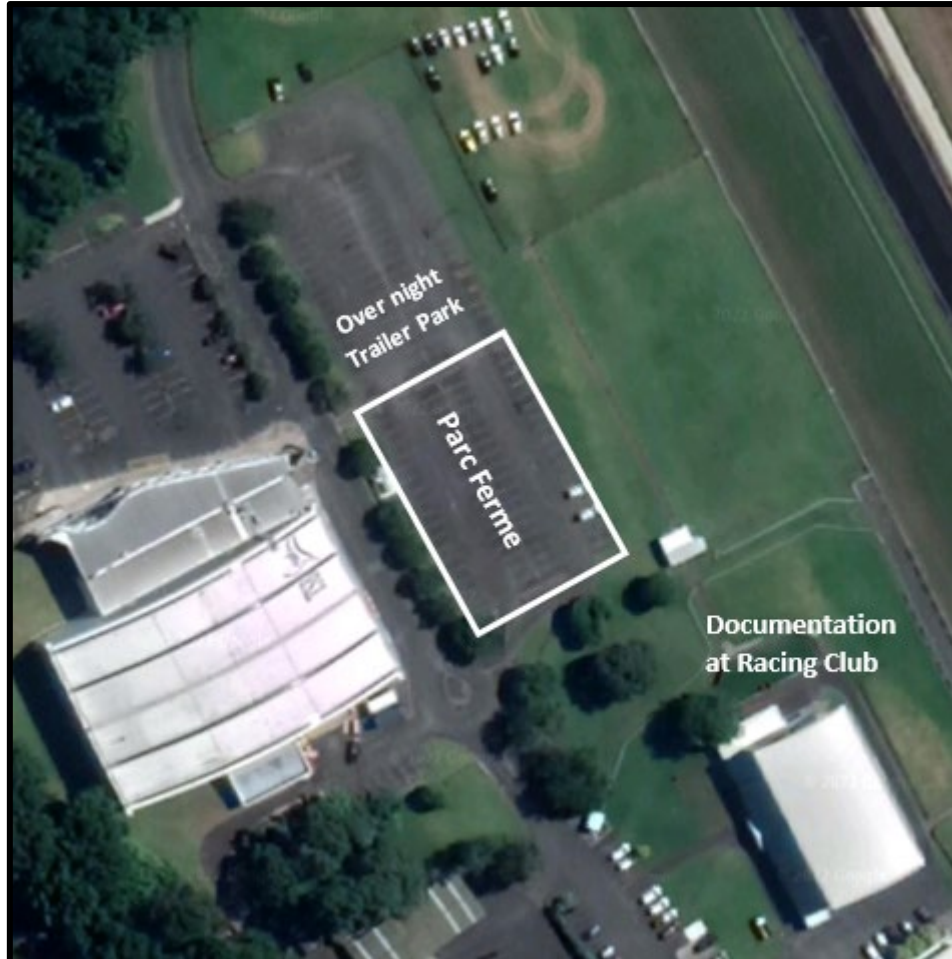
Finish of Event: ***Napier Rd, Havelock North***

Please note the Scrutineer may be called away, please see the CRO if not in attendance.

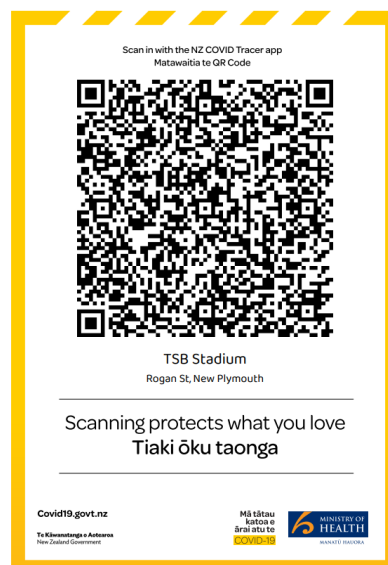
---

# Pre-Start Carpark TSB Stadium New Plymouth

---



***Security on-site from 6pm***





# Wednesday 25<sup>th</sup> May

## LEG 1

LEG 1 WEDNESDAY 25 MAY 2022									
STAGE	Stage Name	Stage Kms.	Touring Kms.	Total Distance	Average Speed	Target time	First Car Due		Road Closure
	Distance to next refuel	36.50	105.71	142.21					
TC 0	Leg 1 Start	TSB Stadium New Plymouth					7:00		
			92.33	92.33	58.31	1:35			
SS 1	MAROKOPA/AWAKINO	36.50					8:40	SECTION 1	7:25am - 11:55am
	Service - MAROKOPA - 10mins		18.46	54.96	65.95	1:00			
	Distance to next refuel	42.77	7.66	50.43					
SS 2	TE ANGA	42.77					9:45		8:30am - 1:00pm
	Service - WAITOMO CAVES - 30mins		30.83	73.60	63.09	1:40			
	Distance to next refuel	44.58	38.31	82.89					
SS 3	OTEWA	44.58					11:30		10:15am - 2:45pm
			10.06	54.64	65.57	0:50			
TC 3A	Lunch - TE KUITI						12:20		
TC 3B	Service - 60mins						13:20		
	Distance to next refuel	23.37	14.37	37.74					
			12.00	12.00	48.00	0:15			
SS 4	OPARURE ROAD	23.37					13:40	SECTION 2	12:25pm - 4:55pm
	Service - PIOPIO - 15mins		4.21	27.58	66.19	0:40			
	Distance to next refuel	22.63	38.97	61.60					
SS 5	TOTORO ROAD EXTENDED	22.63					14:25		1:10pm - 5:40pm
	Service - MOKAU - 10mins		121.18	143.81	63.92	2:25			
	Distance to next refuel	0.00	84.05	84.05					
SS 6	STAGE CANCELLED	0.00							
TC 6A	NEW PLYMOUTH		0.00	0.00	0.00	0:00	16:50		
	Service - NEW PLYMOUTH - 60mins					1:00			
TC 6B	PARC FERME TSB Stadium New Plymouth						17:50		
	Totals	169.85	289.07	458.92					

## START OF LEG SERVICING OPTIONS

Please note it is unlikely to be able to get to every Service stop in the morning with one Service vehicle. Don't forget you can refuel along the route. Note there is a Petrol Station just before the start of Stage 1.

There are 2 options for Service Crews;

### Option A

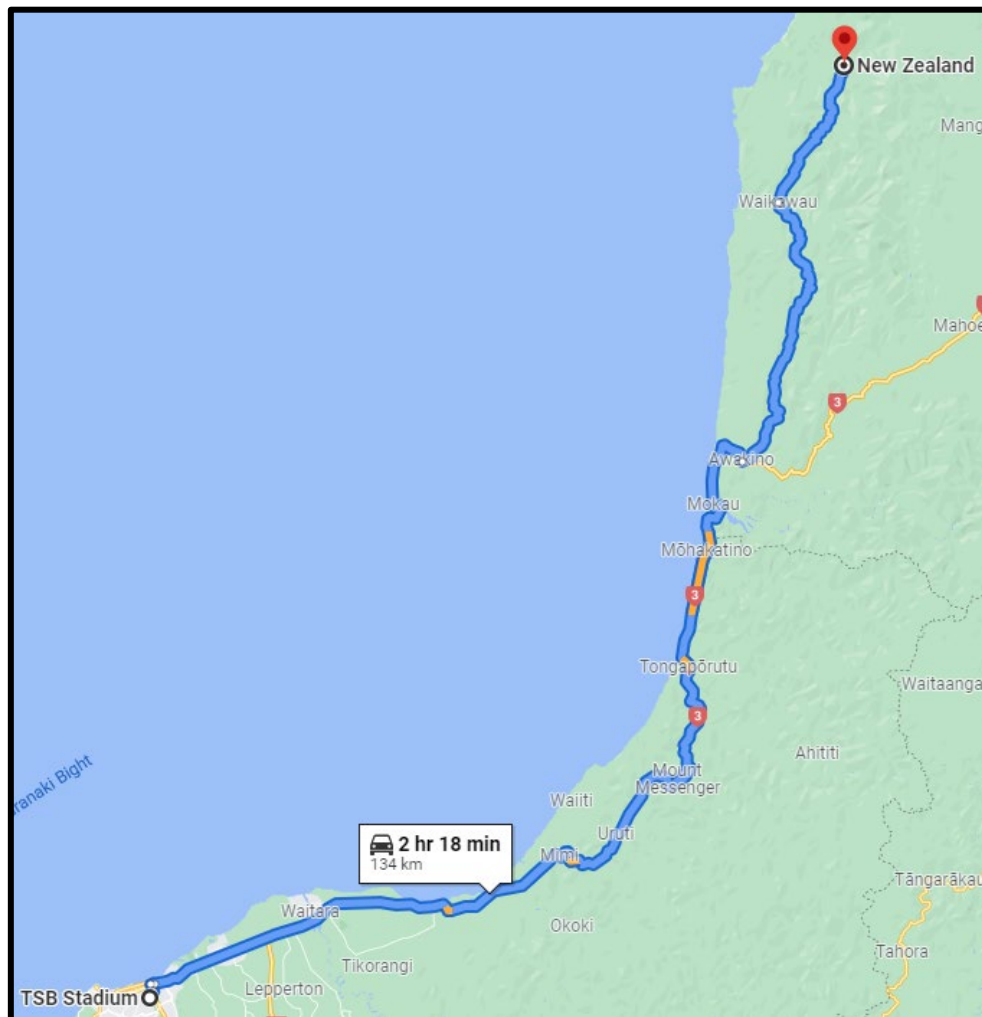
TSB Stadium → Marokopa → Te Kuiti or

### Option B

TSB Stadium → Waitomo Caves → Te Kuiti

# TOURING

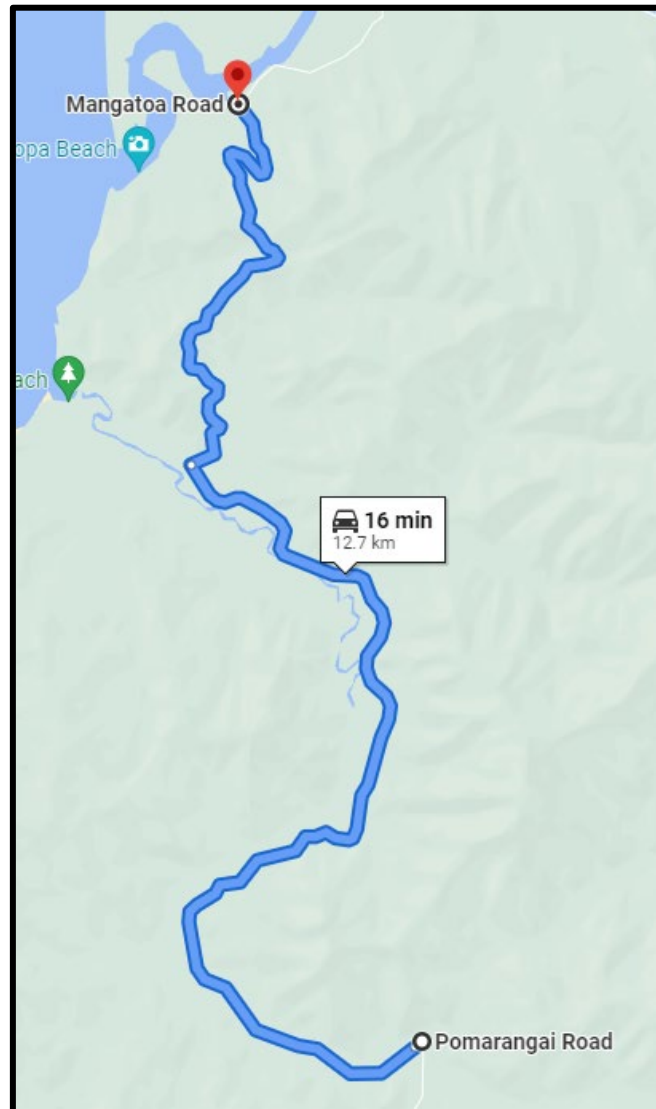
## New Plymouth to Marokopa (Option A)



**\*\* You must be past Awakino by 7:25 to enter before road closure \*\***

<b>Total Distance:</b>	<b>147 kilometres</b>
<b>Estimated Travel Time:</b>	<b>2 hr 38 minutes</b>
Instruction	Distance
Turn <b>left</b> onto Rogan St towards Gover St	700m
Turn <b>left</b> onto SH 3	650m
Turn <b>right</b> to stay on SH 3 (signs for Waitara / Hamilton)	300m
Turn <b>right</b> to stay on SH 3	82m
Use the <b>left</b> 2 lanes to turn <b>left</b> to stay on SH 3	89.7km
Turn <b>left</b> onto Manganui Rd	27.8km
Continue onto Mangatōa Rd	15.2km
Turn <b>right</b> to stay on Mangatōa Rd	4.4km
Service starts from Pomarangai Rd intersection	

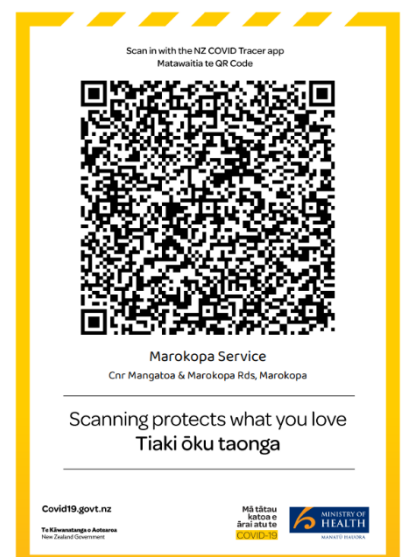
## SERVICE Marokopa



### Roadside Service Between Pomarāngai Rd and Mangatōa Rd.

<b>Service Stop:</b>	Marokopa ( <b>Roadside Service</b> )
<b>Date:</b>	Wednesday 25 <sup>th</sup> May
<b>Service Time Allowable</b>	10 minutes
<b>First Car Due (approx):</b>	9:20 am
<b>Facilities</b>	None (Public Toilets – Moana Quay, Marokopa)
<b>Service Park Surface:</b>	Asphalt on the side of the road

You can leave this service by going on Pomarāngai Rd as shown below, or by following the rally route after the road is open.



## TOURING

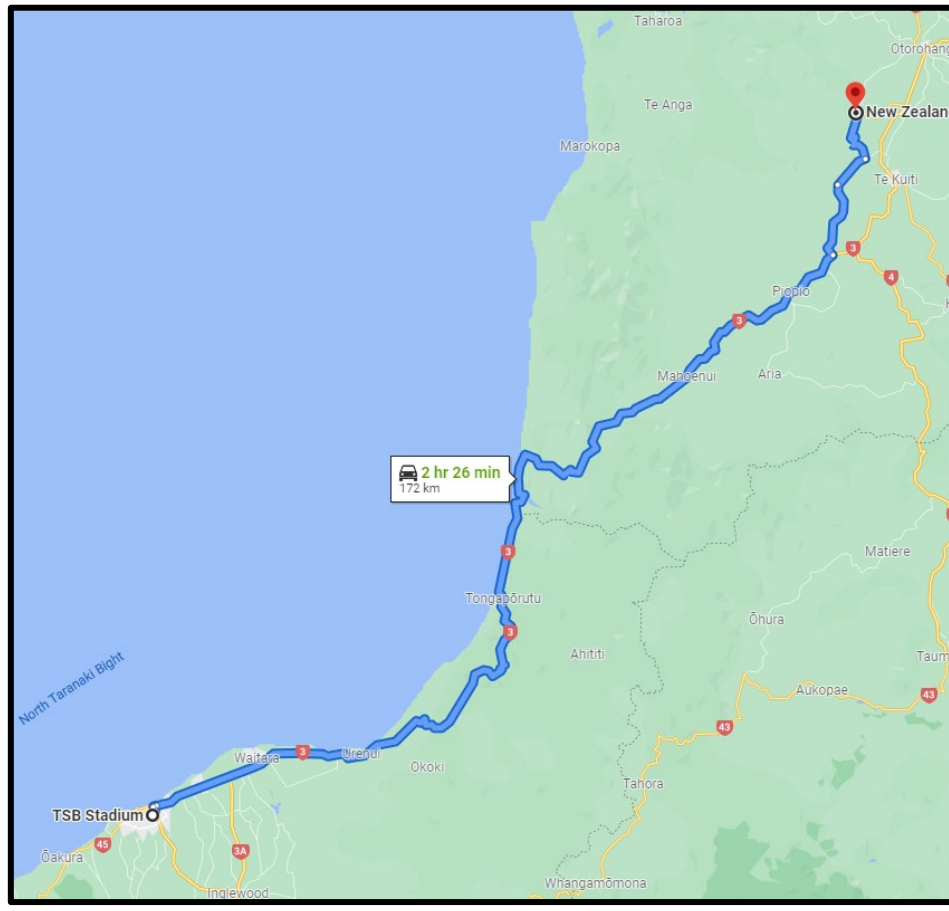
### Marokopa to Waitomo Caves (Option A)



<b>Total Distance:</b>	<b>73.0 kms</b>
<b>Estimated Travel Time:</b>	<b>2 hrs 3 mins</b>
<b>Instruction</b>	<b>Distance</b>
<b>U Turn</b> back onto Mangatōa Rd toward Soundy Rd	12.6km
Continue <b>straight</b> onto Pomarāngai Rd (This is where Service starts)	20.9km
Turn <b>left</b> onto Ngapaenga Rd	13.6km
Turn <b>left</b> onto Oparure Rd	16.7km
Turn <b>left</b> onto Fullerton Rd	8.8km
Turn <b>left</b> onto SH 37	90m
Turn <b>right</b> into the Rugby Club	319m

## TOURING

### TSB Stadium to Waitomo Caves (Option B omitting Marokopa Service)



<b>Total Distance:</b>	<b>172.0 kms</b>
<b>Estimated Travel Time:</b>	<b>2 hrs 26 mins</b>
<b>Instruction</b>	<b>Distance</b>
Turn <b>left</b> on Rogan St towards Gover St	700m
Turn <b>left</b> onto SH 3	650m
Turn <b>right</b> to stay on SH 3 (signs for Waitara / Hamilton)	300m
Turn <b>right</b> to stay on SH 3	82m
Use the <b>left</b> 2 lanes to turn <b>left</b> to stay on SH 3	145km
Turn <b>left</b> onto Troopers Rd	10.6km
Turn <b>right</b> onto Oparure Rd	5.1km
Turn <b>left</b> onto Fullerton Rd	8.8km
Turn <b>left</b> onto SH 37	90m
Turn <b>right</b> into the Rugby Club	319m



---

## SERVICE

### Waitomo Caves Rugby Club


---



**Please do not Service on the grass as this is reserved for Hay.**

<b>Service Stop:</b>	Waitomo Caves Rugby Club
<b>Date:</b>	Wednesday 25 <sup>th</sup> May
<b>Service Time Allowable</b>	30 minutes
<b>First Car Due (approx):</b>	10:20 am
<b>Facilities</b>	Available in Clubrooms
<b>Service Park Surface:</b>	Asphalt

Scan in with the NZ COVID Tracer app  
Matawaitia te QR Code




Waitomo Caves Service  
Waitomo Rugby Club, 28 Waitomo Village Rd, Waitomo Caves

Scanning protects what you love  
Tiaki ōku taonga

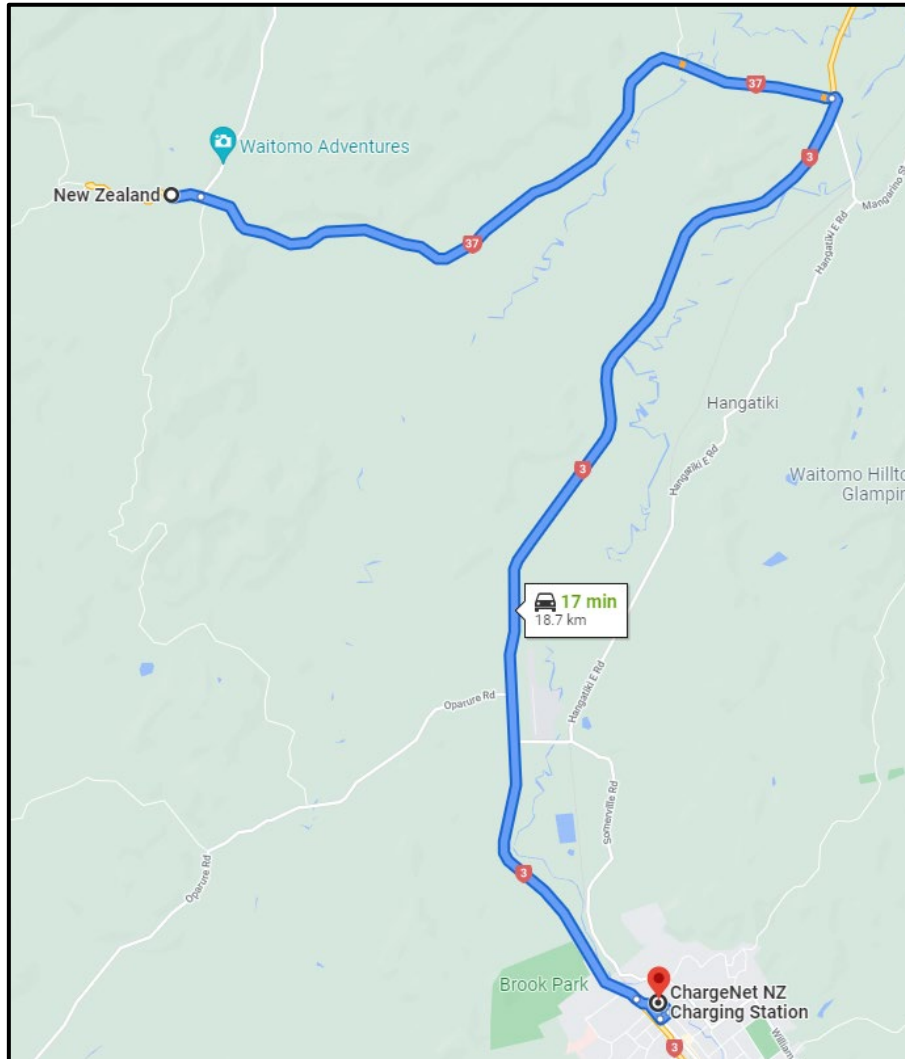
Covid19.govt.nz  
Te Kāwanatanga o Aotearoa  
New Zealand Government

Mā tātau  
kātōa e  
ārai atu te  
COVID-19



## TOURING

### Waitomo Caves to Te Kuiti Lunch



Total Distance:	18.7 kms
Estimated Travel Time:	17 mins

Instruction	Distance
Turn <b>left</b> from Rugby Grounds toward Waitomo Village Rd	29m
Turn <b>left</b> onto Waitomo Village Rd	290m
<b>Continue</b> onto SH 37	7.3km
At the roundabout, take the <b>2<sup>nd</sup> exit</b> onto SH 3 heading to Te Kuiti	10.6km
Turn <b>left</b> onto Rora St (signs for Town Centre)	300m
Turn <b>left</b> onto Alexandra St	110m
Turn <b>left</b> at the 1 <sup>st</sup> cross street onto Taupiri St	150m
Go straight ahead onto the fields for Lunch and Service	


## LUNCH SERVICE

Te Kuiti



<b>Service Stop:</b>	Te Kuiti Lunch
<b>Date:</b>	Wednesday 25 <sup>th</sup> May
<b>Service Time Allowable</b>	60 minutes
<b>First Car Due (approx):</b>	12:20 pm
<b>Facilities</b>	Public Toilets available on Rora St opposite The Warehouse
<b>Service Park Surface:</b>	Grass

Scan in with the NZ COVID Tracer app  
Matawaitia te QR Code



Te Kuiti Service  
1 Rora Street, Te Kuiti

Scanning protects what you love  
Tiaki ōku taonga

Covid19.govt.nz  
Te Kāwanatanga o Aotearoa  
New Zealand Government

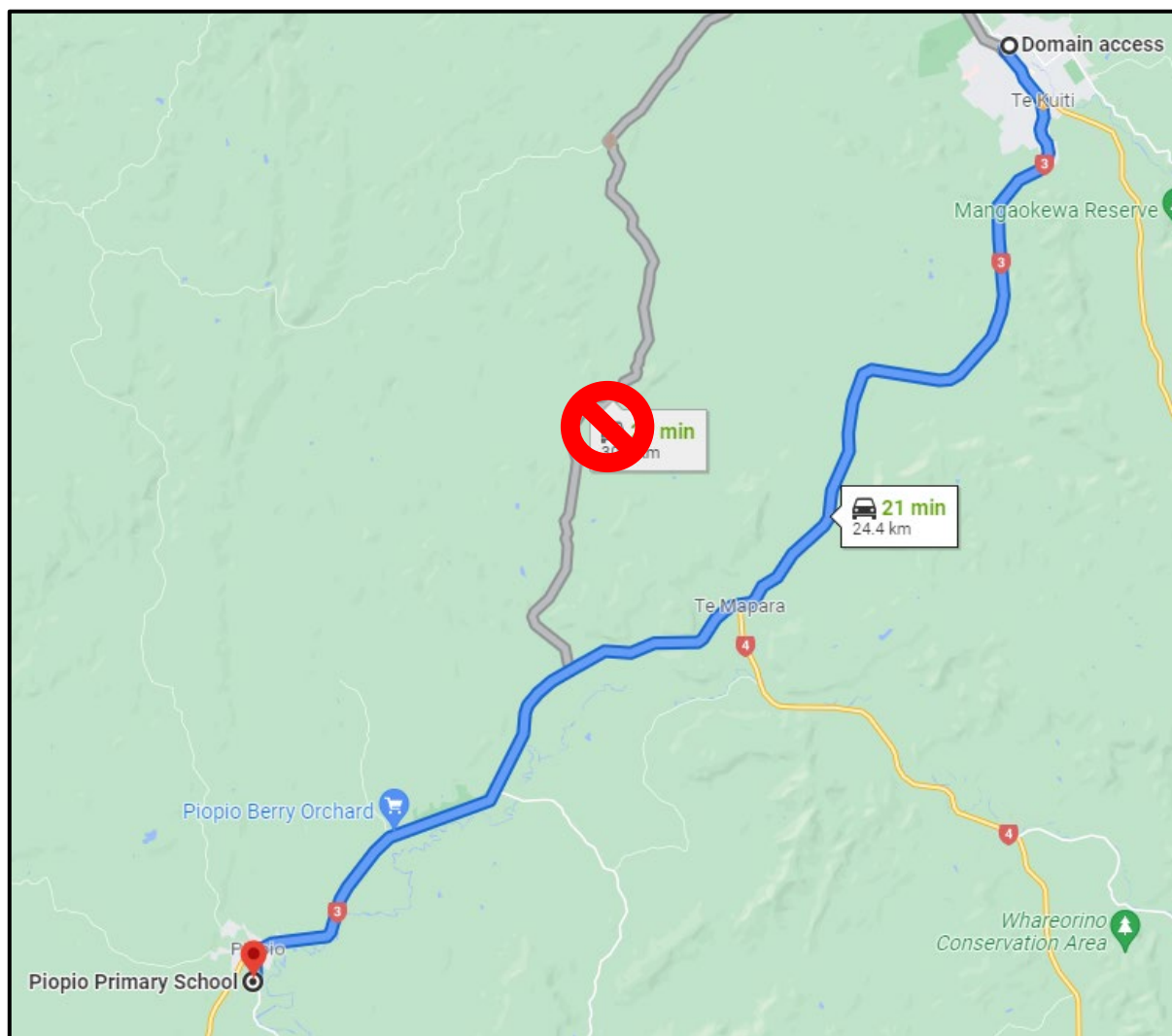
Mā tātau  
katoa e  
ārai atu te  
COVID-19

MINISTRY OF  
HEALTH  
MANATŪ HEIHIHI



# TOURING

## Te Kuiti to Piopio

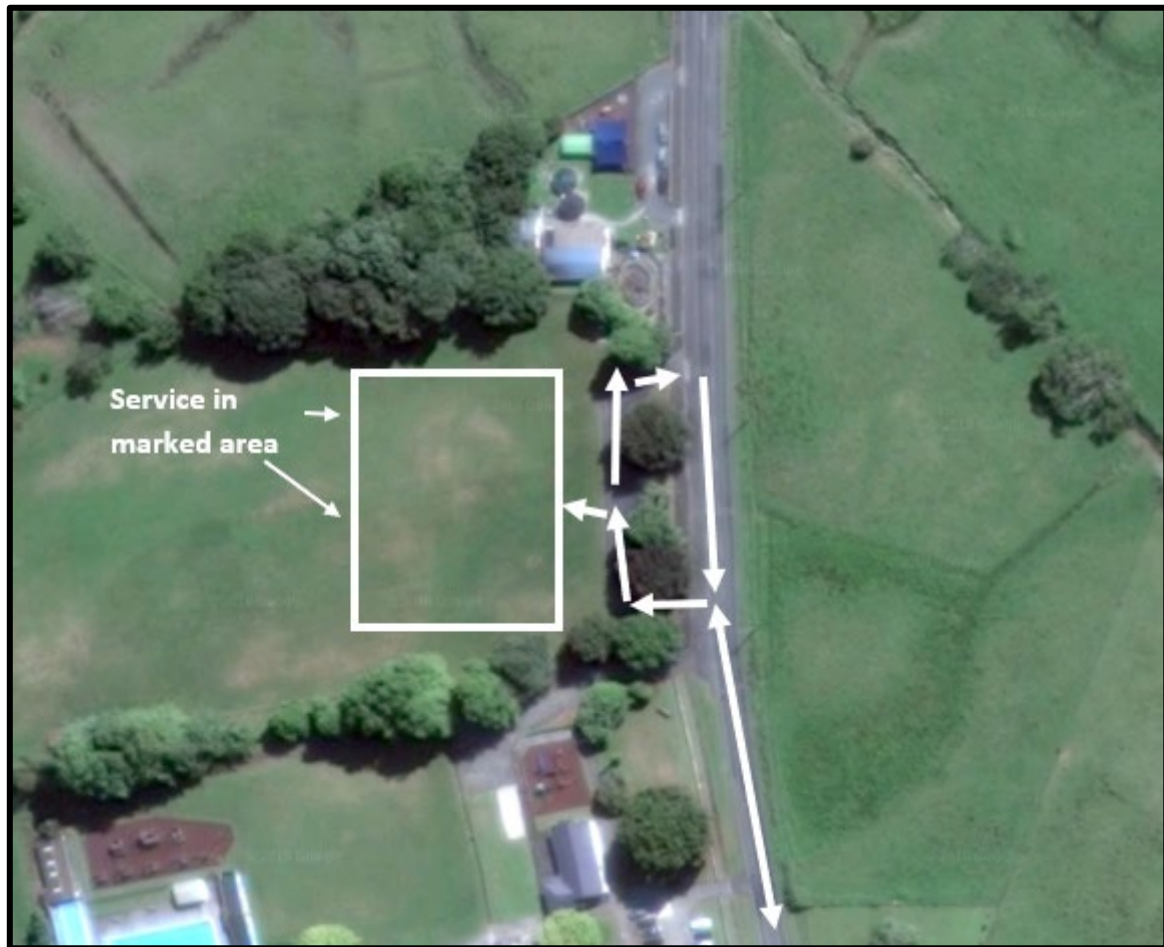


Total Distance:	24.6 kms
Estimated Travel Time:	20 mins

Instruction	Distance
Turn <b>right</b> onto Domain access toward Rora St	95m
Turn <b>left</b> onto Rora St	57m
Turn <b>right</b> to stay on Rora St	33m
Turn <b>left</b> onto Carroll St / SH 3, continue to follow SH 3	23.7km
Turn <b>left</b> onto Ruru St	500m
Continue onto Aria Rd	33m
Piopio Primary School will be on the <b>left</b>	


## SERVICE

### Piopio Primary School



<b>Service Stop:</b>	Piopio Primary School
<b>Date:</b>	Wednesday 25 <sup>th</sup> May
<b>Service Time Allowable</b>	15 minutes
<b>First Car Due (approx):</b>	1:55 pm
<b>Facilities</b>	None - Public Toilets in Piopio, Cnr Moa & Tui Sts
<b>Service Park Surface:</b>	Grass

Scan in with the NZ COVID Tracer app  
Matawaitia te QR Code



Piopio Service  
Piopio Primary School, 14 Aria Rd, Piopio

Scanning protects what you love  
Tiaki ōku taonga

Covid19.govt.nz  
Te Kōwhiriwhiri o Aotearoa  
New Zealand Government

Mā tātou  
kātoā e  
ārai atu te  
COVID-19

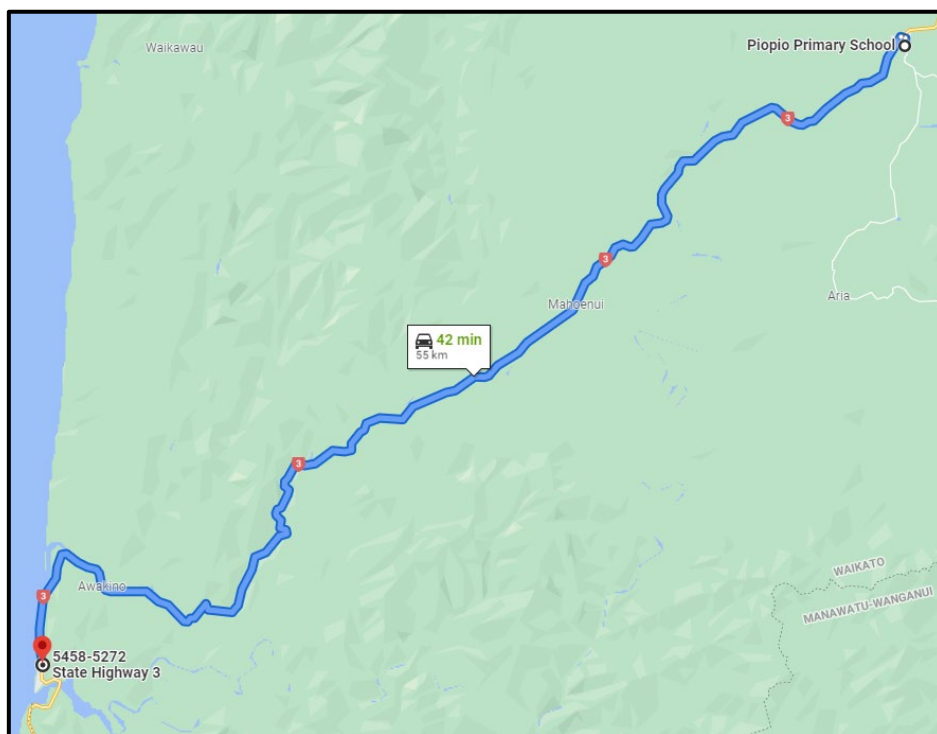
MINISTRY OF  
HEALTH  
MANATU HIRAKA

---

## TOURING

### Piopio to Mokau

---



Total Distance:	55 km
Estimated Travel Time:	42 mins
Instruction	Distance
Turn <b>left</b> on Aria Rd	33m
Continue onto Ruru St	260m
Turn <b>left</b> onto Tui St	200m
Turn <b>left</b> onto SH 3	54.5km
Service starts at the 50km sign	

## SERVICE

### Mokau Roadside




### Roadside Service

#### Between 50km and 100km speeds restriction signs

<b>Service Stop:</b>	Mokau Roadside
<b>Date:</b>	Wednesday 25 <sup>th</sup> May
<b>Service Time Allowable</b>	10 minutes
<b>First Car Due (approx):</b>	3:15 pm
<b>Facilities</b>	Public Toilets
<b>Service Park Surface:</b>	Asphalt on the side of the road

Scan in with the NZ COVID Tracer app  
Matawaitia te QR Code




Mokau Service  
Cnr SH 3 & Oha St, Mokau

Scanning protects what you love  
Tiaki ōku taonga

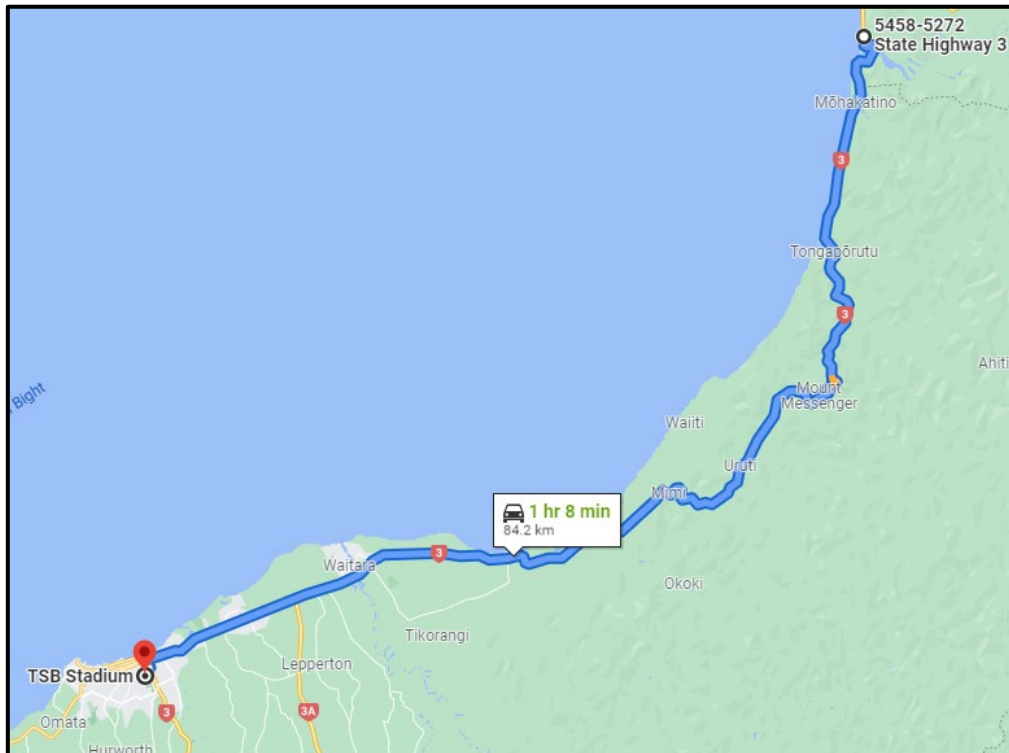
Covid19.govt.nz  
Te Kōwhiriwhiri o Aotearoa  
New Zealand Government

Mā tātau  
katoa e  
ārai atu te  
COVID-19



# TOURING

## Mokau to TSB Stadium

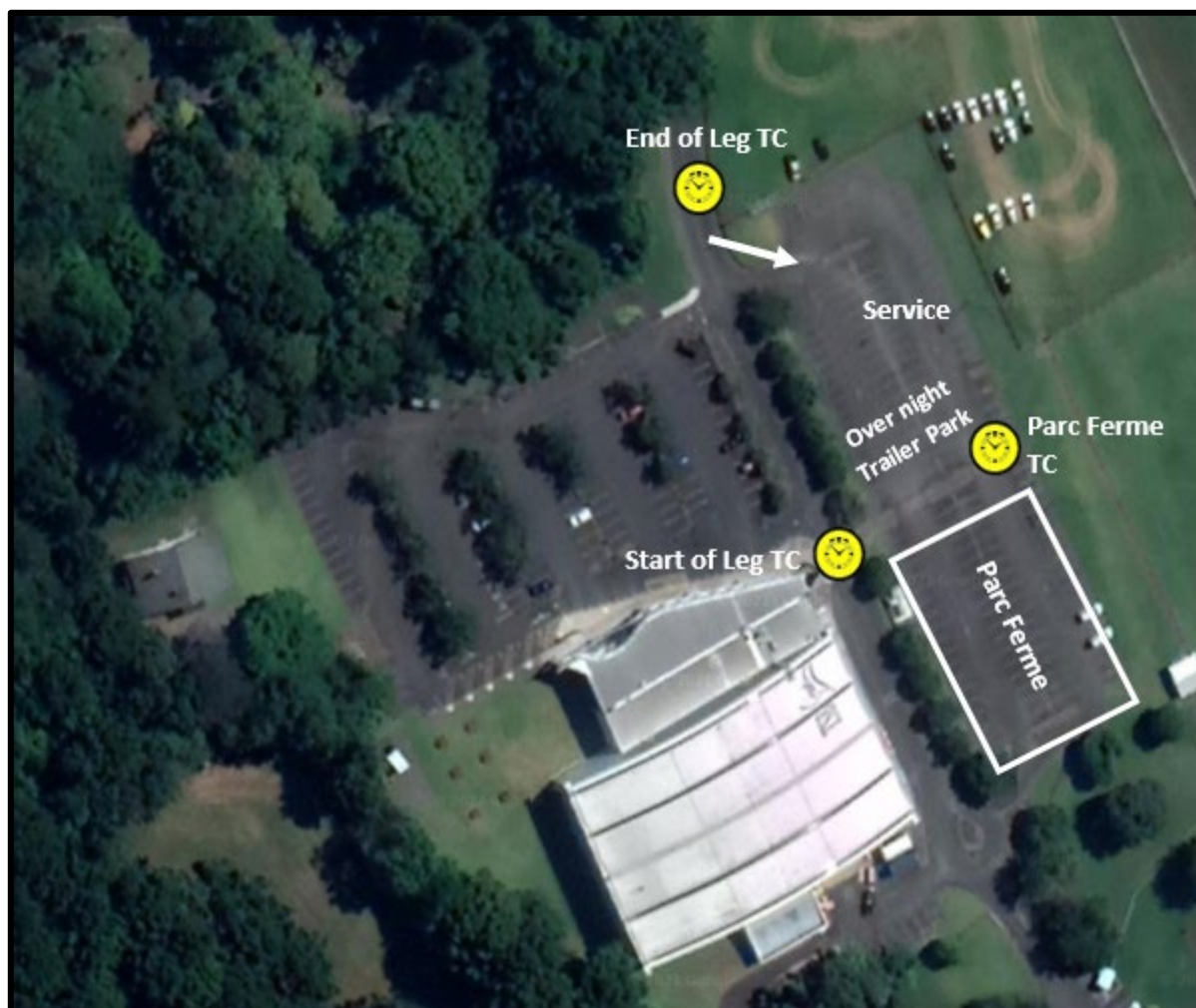


<b>Total Distance:</b>	<b>84.2 kms</b>
<b>Estimated Travel Time:</b>	<b>1 hr 7 mins</b>
Instruction	Distance
Head <b>south</b> on SH 3	83km
Turn <b>left</b> to stay on SH 3 (signs for Inglewood / Whanganui	550m
Turn <b>right</b> onto Rogan St	700m
TSB Stadium will be on the <b>right</b>	




## END OF LEG SERVICE & PARC FERME

TSB Stadium, New Plymouth



<b>Service Stop:</b>	TSB Stadium, New Plymouth
<b>Date:</b>	Wednesday 25 <sup>th</sup> May
<b>Service Time Allowable</b>	60 minutes
<b>First Car Due (approx):</b>	5:50 pm
<b>Facilities</b>	Public Toilets
<b>Service Park Surface:</b>	Asphalt

Scan in with the NZ COVID Tracer app  
Matawaitia te QR Code




TSB Stadium  
Rogan St, New Plymouth

Scanning protects what you love  
Tiaki ōku taonga

Covid19.govt.nz  
Te Kōwhiriwhiri o Aotearoa  
New Zealand Government

Mā tātau  
katoa e  
ārai atu te  
COVID-19



# Thursday 26<sup>th</sup> May

## LEG 2

LEG 2 THURSDAY 26 MAY 2022									
STAGE	Stage Name	Stage Kms.	Touring Kms.	Total Distance	Average Speed	Target time	First Car Due		Road Closures
	Distance to next refuel	26.02	32.77	58.79					
TC6C	Leg 2 Start	TSB Stadium New Plymouth					8:20		
			23.92	23.92	41.01	0:35			
SS 7	INGLEWOOD JUMPS	26.04					9:00		7:45am - 12:15pm
	Service - KAIMATA SCHOOL - 30mins		15.08	41.12	54.83	1:15			
	Distance to next refuel	18.20	18.43	36.63					
SS 8	RATAPIKO	18.20					10:20		9:05am - 1:35pm
	Service - STRATFORD - 5mins		34.23	52.43	62.92	0:55			
	Distance to next refuel	38.98	22.99	61.97					
SS 9	WHANGAMOMONA 1	38.98					11:20		10:05am - 7:15pm
	Service - WHANGAMOMONA - 15mins		58.48	97.46	68.80	1:40			
	Distance to next refuel	34.74	156.05	190.79					
SS 10	OHURA	34.74					13:05		11:50am - 4:20pm
			98.53	133.27	66.64	2:00			
TC 10A	Lunch - WHANGAMOMONA						15:05		
TC 10B	Service - 44mins						15:49		
	Distance to next refuel	39.09	62.35	101.44					
			0.10	0.10	6.00	0:01			
SS 11	WHANGAMOMONA 2	39.09					15:55		10:05am - 7:15pm
			62.25	101.34	64.00	1:45			
TC11A	Service - TSB Stadium - 120mins						17:40		
TC11B	PARC FERME TSB Stadium New Plymouth						20:40		
	Totals	157.05	292.59	449.64					

## START OF LEG SERVICING OPTIONS

Due to the road closure for Whangamomona you will not be able to attend all Service stops with one Service vehicle.

**\*\*The latest entry into Whangamomona is 10:05am as per the road closure.\*\***

Here are your options;

### Option A

TSB Stadium -> Kaimata School -> Stratford

### Option B

TSB Stadium -> Stratford and the back to End of Leg service.

### Option C

TSB Stadium -> Whangamomona, then follow rally back to End of Leg service.

## TOURING

### TSB Stadium to Kaimata School (Option A)



Total Distance:	25.6 kms
Estimated Travel Time:	22 mins
Instruction	Distance
Turn onto Rogan St toward Gover St	700m
Turn <b>right</b> onto SH 3	17.7km
Turn <b>left</b> onto SH 3A	59m
Continue <b>straight</b> onto Rata St	600m
Continue onto Tarata Rd	7.2km
Kaimata School will be on your <b>left</b>	



## SERVICE


### Kaimata School

Breakfast brought  
to you by...



Service Stop:	Kaimata School
Date:	Thursday 26 <sup>th</sup> May
Service Time Allowable	30 minutes
First Car Due (approx):	9:25
Facilities	Toilets available Breakfast available
Service Park Surface:	Grass

Scan in with the NZ COVID Tracer app  
Matawaitia te QR Code




Kaimata Service  
Kaimata School, 715 Tarata Rd, Kaimata

Scanning protects what you love  
Tiaki ōku taonga

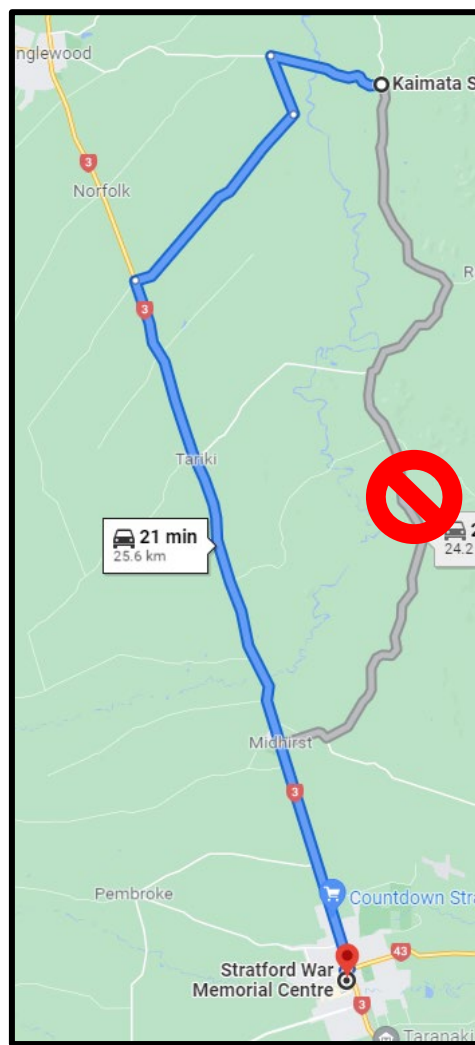
Covid19.govt.nz  
Te Kaitiaki Take Kōwhiri  
New Zealand Government

Mā tātatau  
kōwhiri  
ārai atu te  
COVID-19



## TOURING

### Kaimata School to Stratford War Memorial Centre

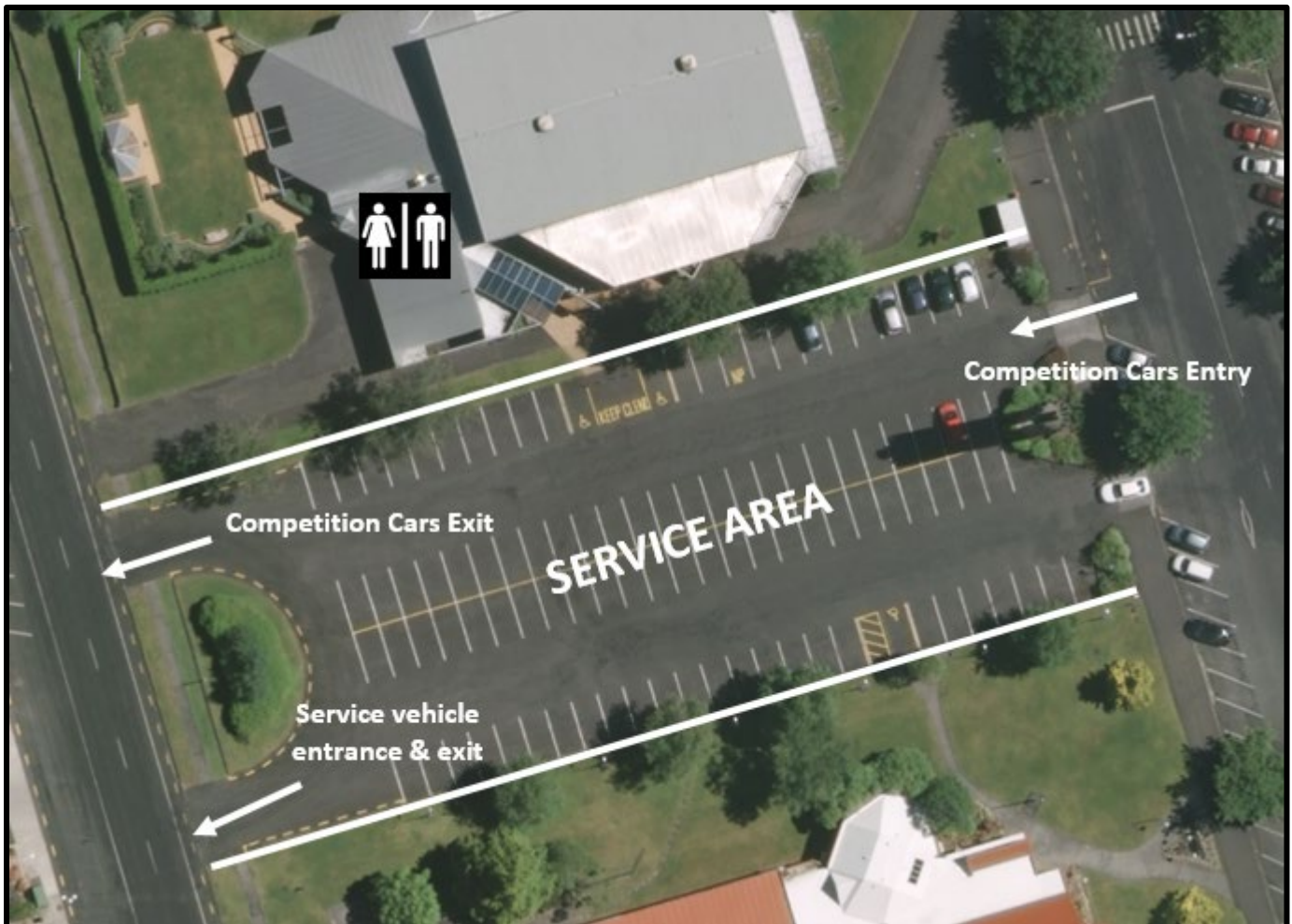


<b>Total Distance:</b>	<b>25.6 kms</b>
<b>Estimated Travel Time:</b>	<b>21 mins</b>

<b>Instruction</b>	<b>Distance</b>
Turn <b>right</b> from school fields	
Turn <b>right</b> on Tarata Rd	2.6km
Turn <b>left</b> onto Suffolk Rd South	1.4km
Turn <b>right</b> onto Norfolk Rd Lower	5.2km
Turn <b>left</b> onto State Highway 3	16km
At the roundabout, take the <b>3rd exit</b> onto Regan St	270m
Turn <b>left</b> onto Portia St	240m
Turn <b>left</b> – Stratford War Memorial Centre will be on the left	17m


## SERVICE

### Stratford War Memorial Centre



Service Stop:	Stratford War Memorial Centre
Date:	Thursday 26 <sup>th</sup> May
Service Time Allowable	5 minutes
First Car Due (approx):	10:40 am
Facilities	Public Toilets
Service Park Surface:	Asphalt

Scan in with the NZ COVID Tracer app  
Matawaitia te QR Code




Stratford Service  
Stratford War Memorial Carpark, 55 Miranda St, Stratford

Scanning protects what you love  
Tiaki ōku taonga

Covid19.govt.nz  
Te Kōwhirianga o Aotearoa  
New Zealand Government

Mā tātau  
kātia e  
COVID-19

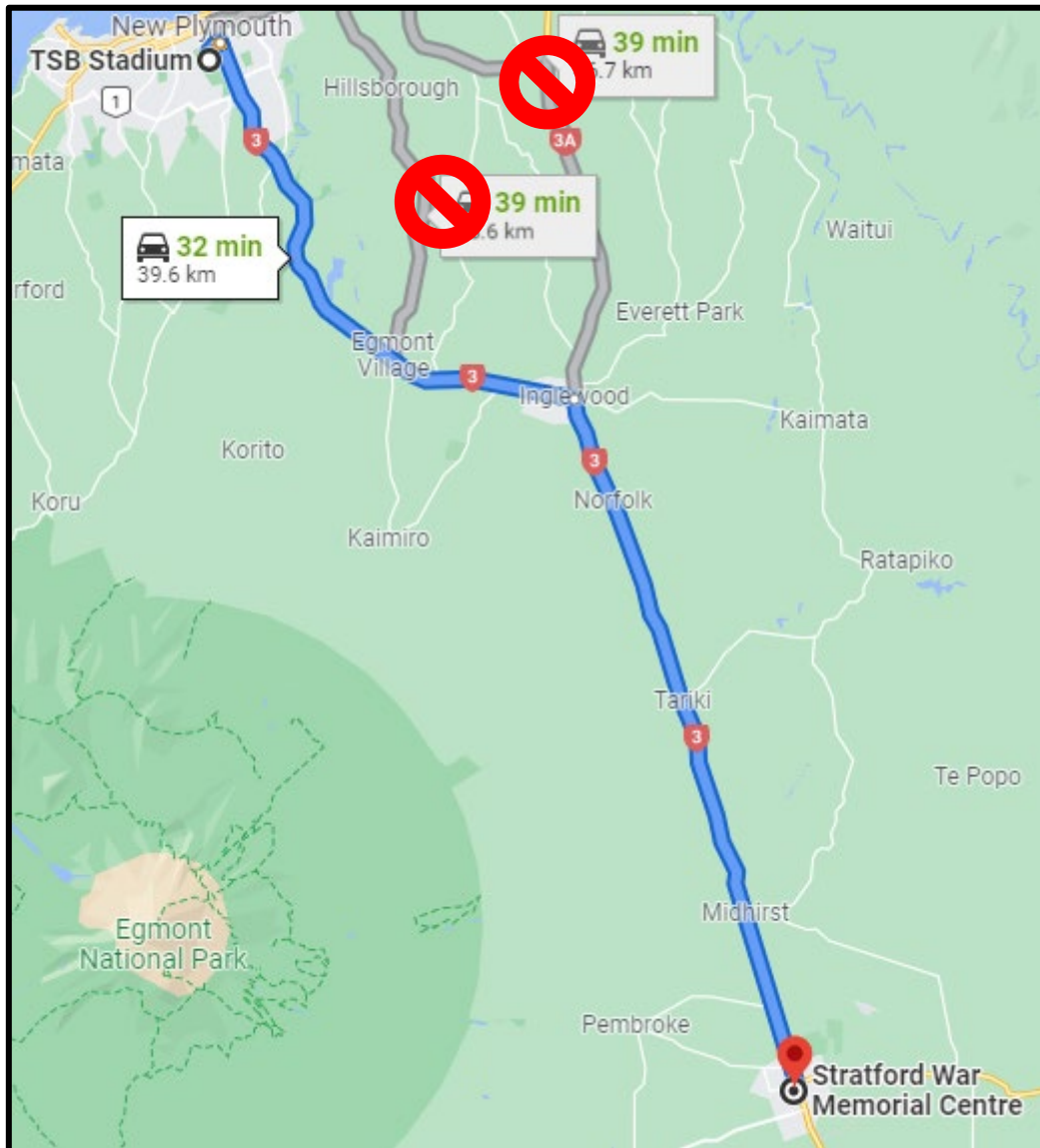


MINISTRY OF HEALTH  
MANATU HIAKORA



## TOURING (OPTION B)

### TSB Stadium to Stratford War Memorial Centre

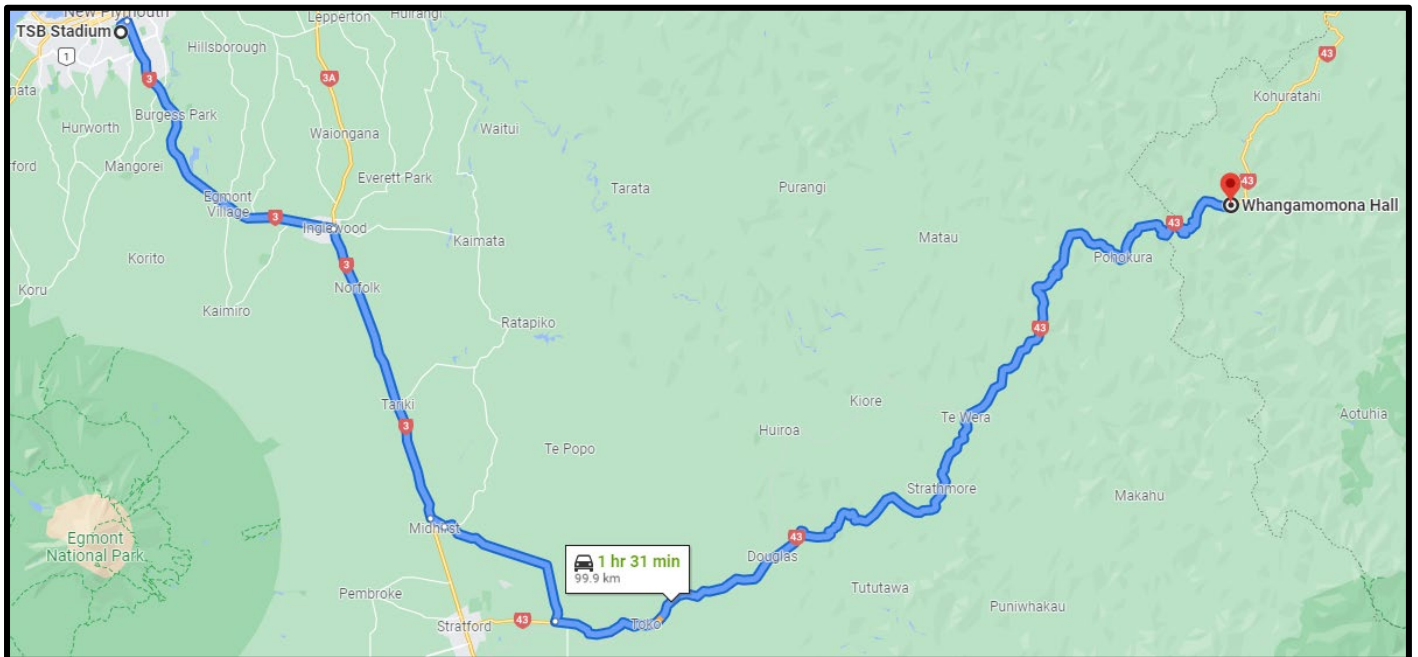


<b>Total Distance:</b>	<b>44.5 km</b>
<b>Estimated Travel Time:</b>	<b>42 min</b>

Instruction	Distance
Turn onto Rogan St toward Gover St	700m
Turn <b>right</b> onto SH 3	17.1km
Slight <b>right</b> to stay on SH 3 (signs for Whanganui)	21.4km
At the roundabout, take the <b>3rd exit</b> onto Regan St	270m
Turn <b>left</b> onto Portia St	240m
Turn <b>left</b> – Stratford War Memorial Centre will be on the left	17m

## TOURING (OPTION C)

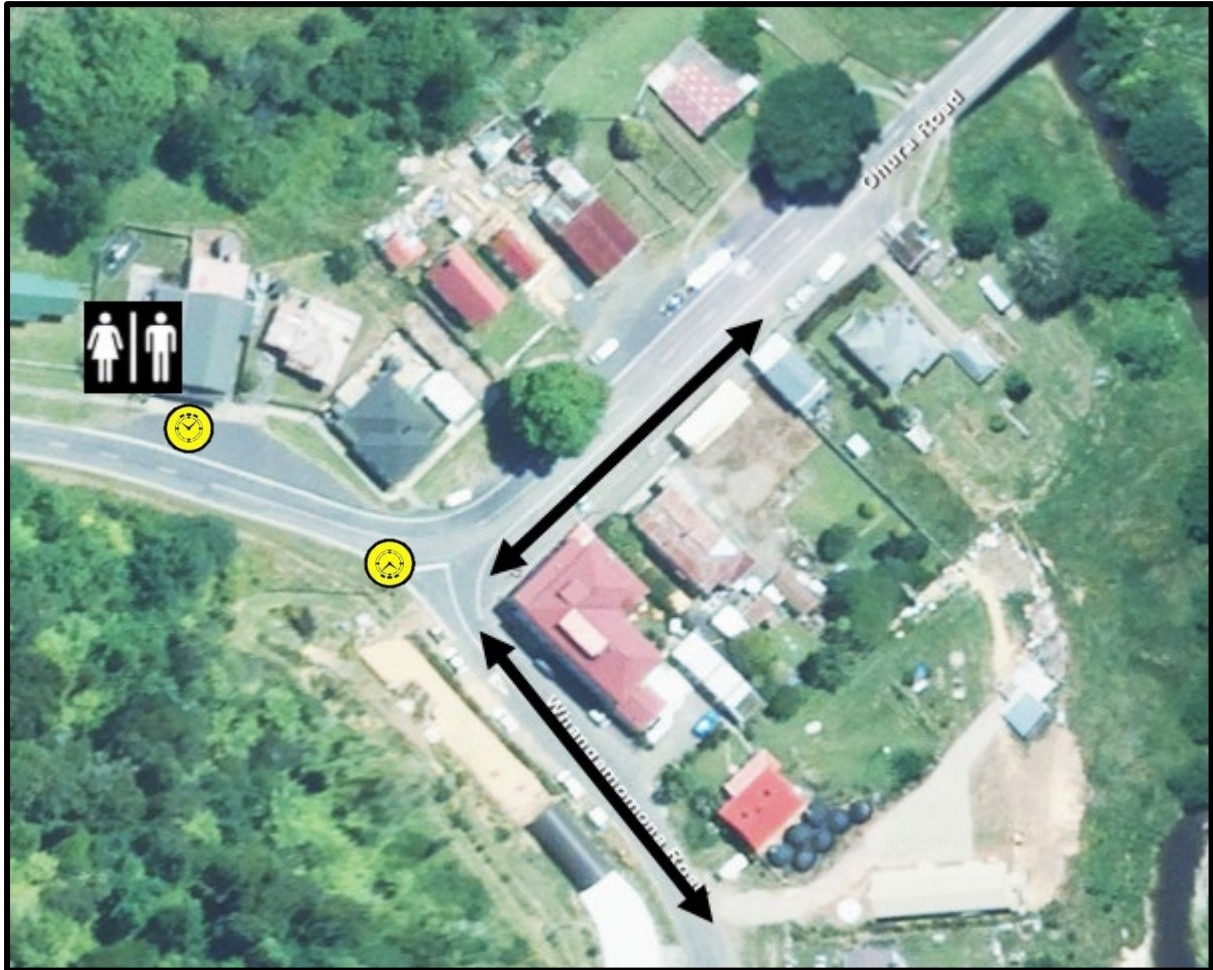
### TSB Stadium to Whangamomona



<b>Total Distance:</b>	<b>99.9 kms</b>
<b>Estimated Travel Time:</b>	<b>1 hour 31 mins</b>
<b>Instruction</b>	<b>Distance</b>
Turn onto Rogan St toward Gover St	700m
Turn <b>right</b> onto SH 3	17.1km
Slight <b>right</b> to stay on SH 3 (signs for Whanganui)	15.6km
Turn <b>left</b> onto Kent Terrace	850m
Turn <b>left</b> onto Beaconsfield Rd	8.8km
Turn <b>left</b> onto East Rd / SH43 (signs for Toko / Te Whera / Ohura)	56.9km
Continue to follow SH 43 – Whangamomona Hall will be on the <b>left</b>	

## SERVICE

### Whangamomona




Service on the roadside and around the township

<b>Service Stop:</b>	Whangamomona Service
<b>Date:</b>	Thursday 26 <sup>th</sup> May
<b>Service Time Allowable</b>	15 minutes
<b>First Car Due (approx):</b>	11:50 am
<b>Facilities</b>	Public Toilets
<b>Service Park Surface:</b>	Asphalt

<b>Service Stop:</b>	Whangamomona Lunch
<b>Date:</b>	Thursday 26 <sup>th</sup> May
<b>Service Time Allowable</b>	44 minutes
<b>First Car Due (approx):</b>	3:05 pm
<b>Facilities</b>	Public Toilets
<b>Service Park Surface:</b>	Asphalt

Scan in with the NZ COVID Tracer app  
Matawaitia te QR Code



Whangamomona Service  
Whangamomona Hall, 6013 Ohura Rd, Whangamomona

---

Scanning protects what you love  
Tiaki ōku taonga

---

Covid19.govt.nz

Tu Kōwhiriwhiri o Aotearoa  
New Zealand Government

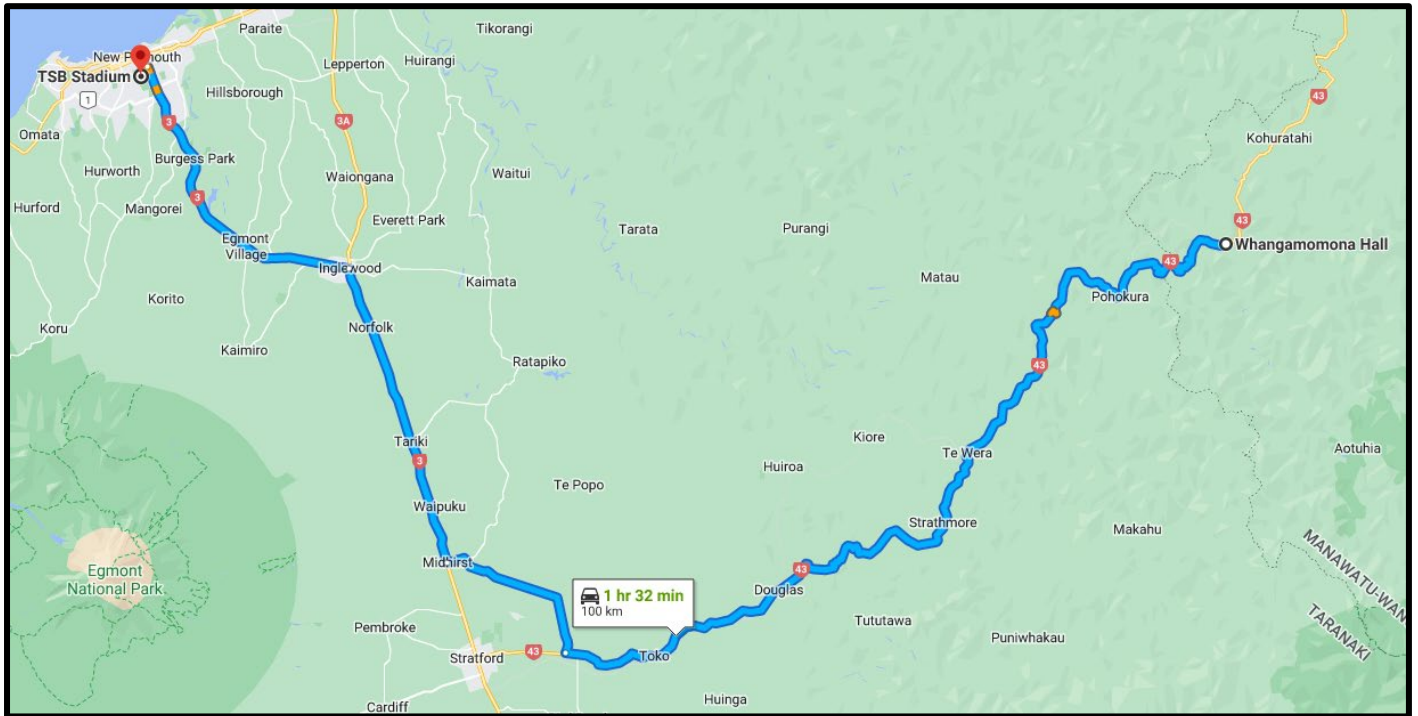
Mā tātāu  
kōwhiriwhiri  
ārai atu te  
COVID-19

MINISTRY OF  
HEALTH

MANATU HAUORA

## TOURING

### Whangamomona to TSB Stadium

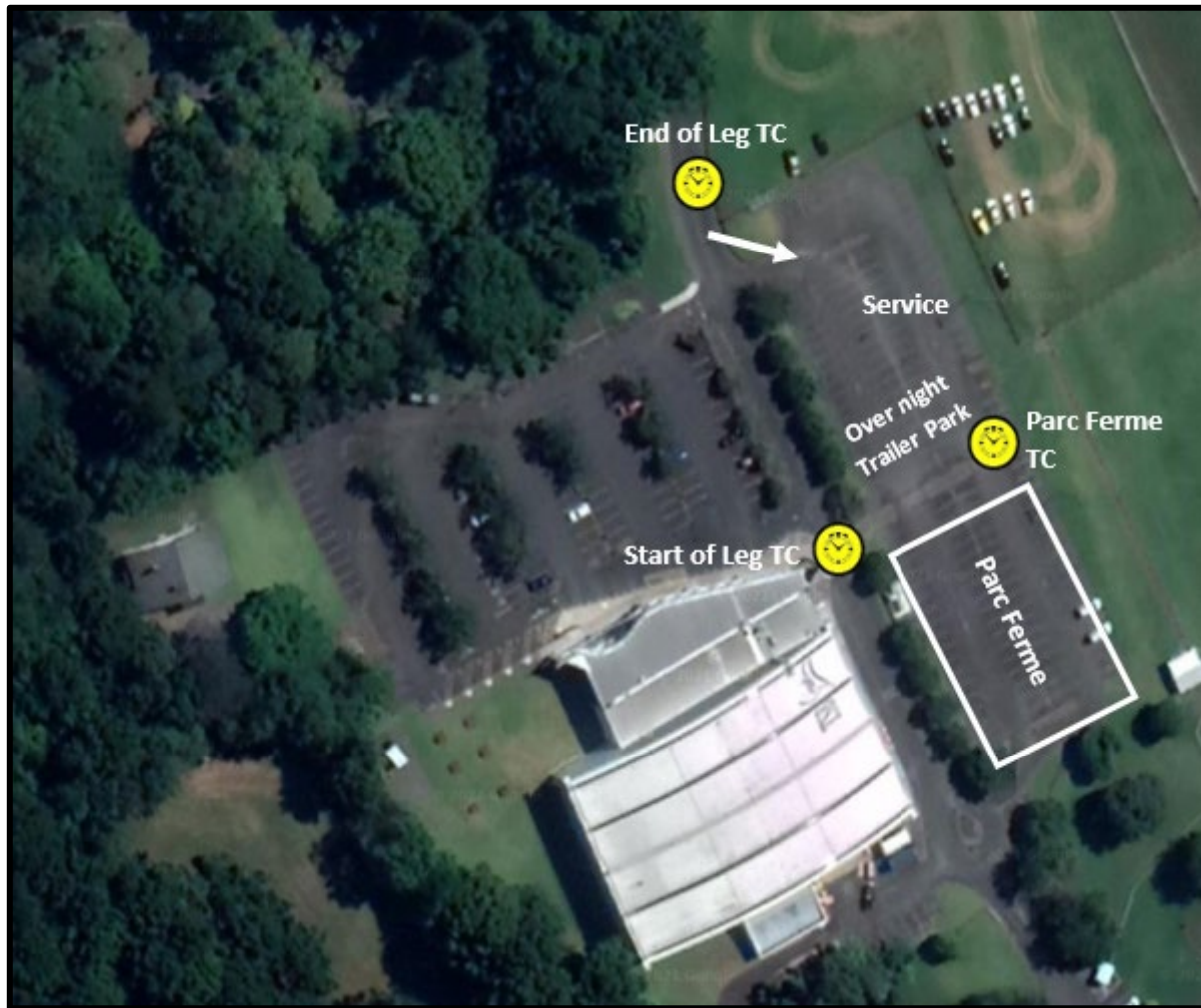


<b>Total Distance:</b>	<b>100 kms</b>
<b>Estimated Travel Time:</b>	<b>1 hr 32 mins</b>
<b>Instruction</b>	<b>Distance</b>
Head towards Stratford on New Zealand SH 43 toward Mangare Rd	56.9km
Turn <b>right</b> onto Beaconsfield Rd (signs for Te Popo)	9.3km
Turn <b>right</b> onto Mountain Rd / State Hwy3 – Continue to follow State Hwy 3	16.2km
Slight <b>left</b> to stay on State Hwy 3 (signs for New Plymouth)	17.1km
Turn <b>left</b> onto Rogan St	700m
TSB Stadium will be on the right	




## END OF LEG SERVICE & PARC FERME

TSB Stadium, New Plymouth



<b>Service Stop:</b>	TSB Stadium, New Plymouth
<b>Date:</b>	Thursday 26 <sup>th</sup> May
<b>Service Time Allowable</b>	120 minutes
<b>First Car Due (approx):</b>	5:40 pm
<b>Facilities</b>	Public Toilets
<b>Service Park Surface:</b>	Asphalt

Scan in with the NZ COVID Tracer app  
Matawaitia te QR Code




TSB Stadium  
Rogan St, New Plymouth

Scanning protects what you love  
Tiaki ōku taonga

Covid19.govt.nz  
Te Kāwanatanga o Aotearoa  
New Zealand Government

Mā tātau  
kōwhiri e  
ārai atu te  
COVID-19





# Friday 27<sup>th</sup> May

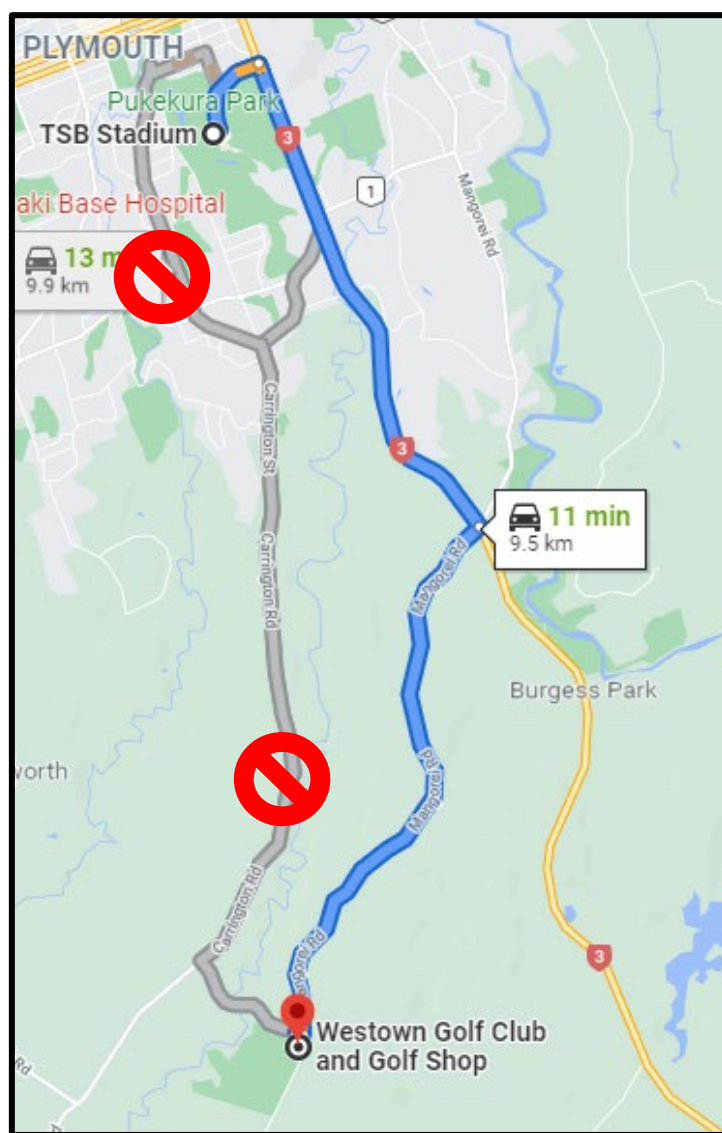
## LEG 3

### LEG 3 FRIDAY 27 MAY 2022

STAGE	Stage Name	Stage Kms.	Touring Kms.	Total Distance	Average Speed	Target time	First Car Due	Road Closures
	Distance to next refuel	20.78	30.15	50.93				
TC11C	Leg 3 Start	TSB Stadium New Plymouth					8:20	
			19.12	19.12	32.78	0:35		
SS 12	MT EGMONT	20.78					9:00	7:45am - 12:15pm
	Service - WESTOWN GOLF COURSE- 5mins		13.87	34.65	69.30	0:35		
	Distance to next refuel	23.65	24.93	48.58				
SS 13	HURWORTH	9.68					9:40	8:25am - 12:55pm
			18.06	27.74	66.58	0:25		
SS 14	DOVER/OXFORD ROADS	13.97					10:10	8:55am - 1:25pm
	Service - OKATO - 20mins		14.31	28.28	67.87	0:45		
	Distance to next refuel	10.11	69.35	79.46				
SS 15	WAREA	10.11					11:00	9:45am - 2:15pm
			59.07	69.18	75.47	0:55		
TC 15A	Lunch - STRATFORD						11:55	
TC 15B	Service - 60mins						12:55	
	Distance to next refuel	39.01	46.87	85.88				
			12.53	12.53	50.12	0:15		
SS 16	DOUGLAS	15.35					13:15	12:00pm - 4:30pm
			22.15	37.50	64.29	0:35		
SS 17	INSANE ELTHAM	23.66					13:55	12:40pm - 5:10pm
	Service - HAWERA - 20mins		56.61	80.27	60.20	1:40		
	Distance to next refuel	23.11	94.21	117.32				
SS 18	KOHI LOOP	23.11					15:40	2:25pm - 6:55pm
			49.79	72.90	62.49	1:10		
SS 19	STAGE CANCELLED	0.00						
TC 19A	WHANGANUI		0.00	0.00	0.00		16:50	
	Service - WHANGANUI - 60mins					1:00		
TC 19B	PARC FERME Whanganui War Memorial Centre						17:50	
	Totals	116.66	265.51	382.17				

## TOURING

### TSB Stadium to Westown Golf Course



Total Distance:	9.5 kms
Estimated Travel Time:	11 mins
Instruction	Distance
Turn onto Rogan St toward Gover St	700m
Turn <b>right</b> onto SH 3	4.1km
Turn <b>right</b> onto Mangorei Rd (signs for Pukeiti Gardens / Golf Club Westown)	4.6km
Turn <b>right</b> onto Baker Rd	51m
Turn <b>left</b> into Westown Golf Course carpark	170m

---

## SERVICE

### Westown Golf Course


---



Service in the Westown Golf Course car park

<b>Service Stop:</b>	Westown Golf Course
<b>Date:</b>	Friday 27 <sup>th</sup> May
<b>Service Time Allowable</b>	5 minutes
<b>First Car Due (approx):</b>	9:20 am
<b>Facilities</b>	Toilets available
<b>Service Park Surface:</b>	Asphalt

Scan in with the NZ COVID Tracer app  
Matawaihia te QR Code



Westown Service  
Westown Golf Club, 964 Mangorei Rd, New Plymouth

Scanning protects what you love  
Tiaki ōku taonga

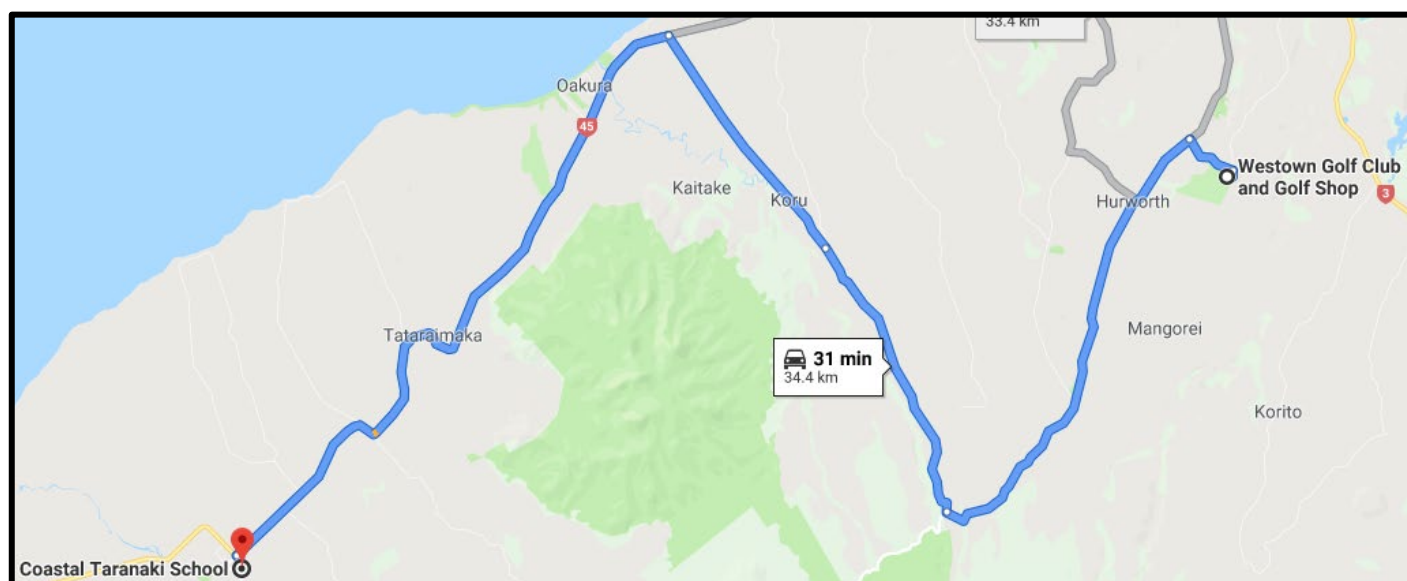
Covid19.govt.nz  
Te Kāwanatanga o Aotearoa  
New Zealand Government

Mā tātou  
katoa e  
ārai atu te  
COVID-19

MINISTRY OF  
HEALTH  
MANATU HEATUHA

## TOURING

### Westown Golf Course to Coastal Taranaki School - Okato



Total Distance:	34.4 km
Estimated Travel Time:	31 min

Instruction	Distance
Exit Carpark and turn <b>left</b> onto Baker Rd	1.0km
Turn <b>left</b> onto Carrington Rd	8.9 km
Turn <b>right</b> onto Plymouth Rd	5.5 km
<b>Continue</b> onto Koru Rd	4.8 km
Turn <b>left</b> onto SH 45	13.7 km
At the roundabout, take the <b>2nd exit</b> onto Old S Rd	250m
Turn <b>left</b> onto Oxford Rd	190m
The Service Park will be on your <b>right</b>	



## SERVICE


### Coastal Taranaki School - Okato



Take care when entering and exiting field.

<b>Service Stop:</b>	Okato (Coastal Taranaki School)
<b>Date:</b>	Friday 27 <sup>th</sup> May
<b>Service Time Allowable</b>	20 minutes
<b>First Car Due (approx):</b>	10:20 am
<b>Facilities</b>	None – Public Toilets at 76 Carthew St, Okato
<b>Service Park Surface:</b>	Grass

Scan in with the NZ COVID Tracer app  
Matawaitia te QR Code




Okato Service  
Coastal Taranaki School, 92 Carthew St, New Plymouth

Scanning protects what you love  
Tiaki ōku taonga

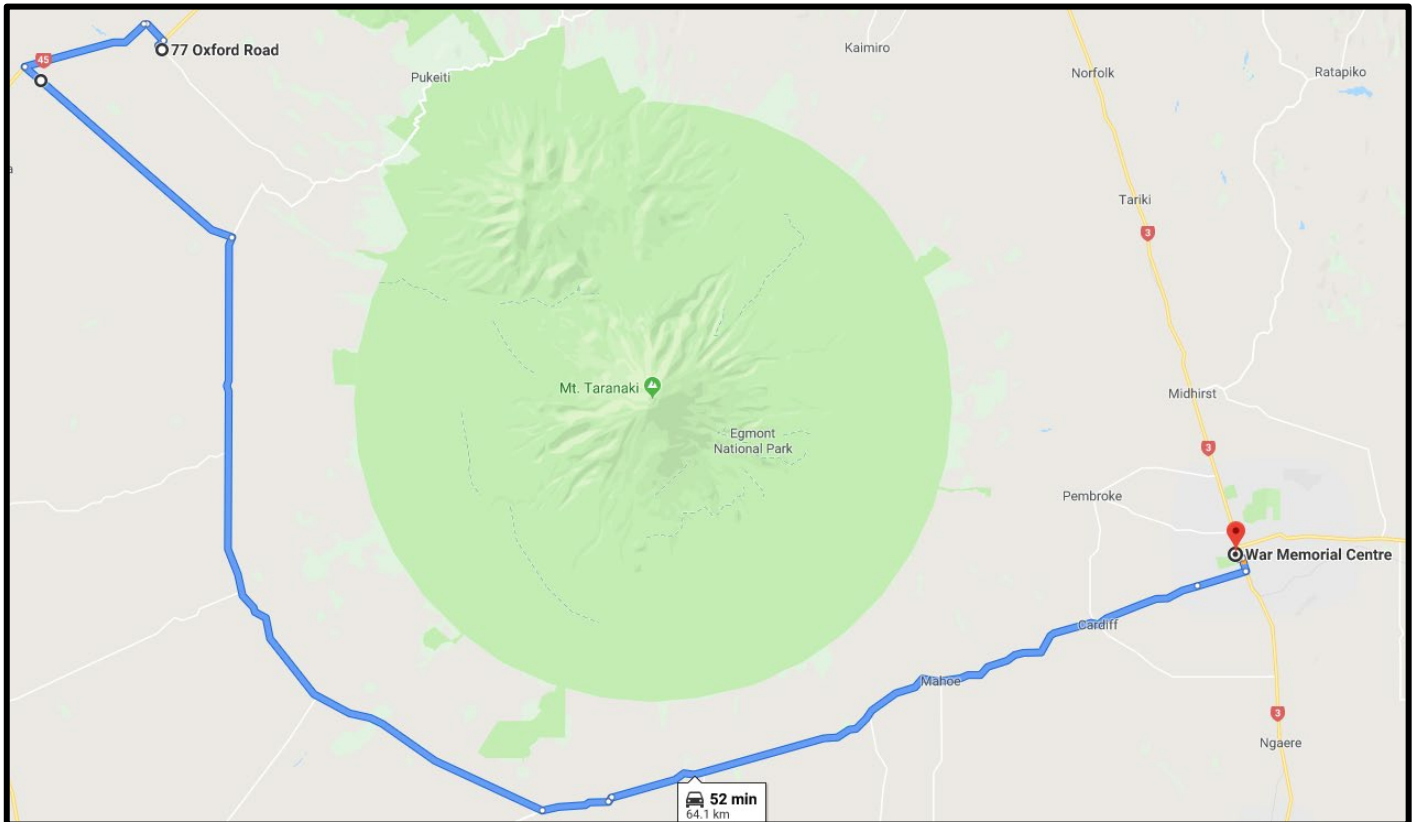
Covid19.govt.nz  
Te Kāwanatanga o Aotearoa  
New Zealand Government

Mā tātou  
katoa e  
ārai tatou  
COVID-19



## TOURING

### Coastal Taranaki School to Stratford War Memorial Centre

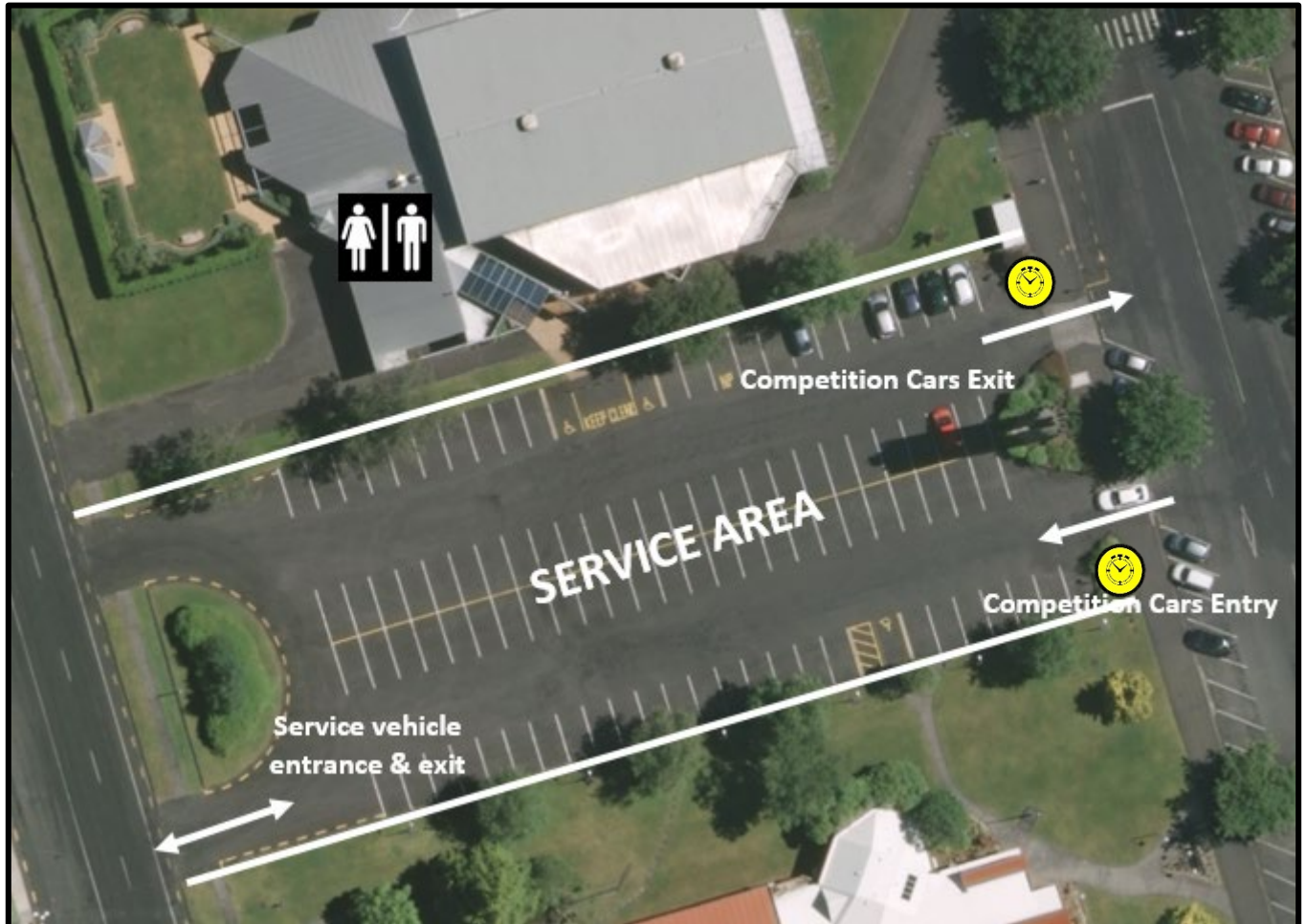


<b>Total Distance:</b>	<b>64.1 km</b>
<b>Estimated Travel Time:</b>	<b>52 min</b>

Instruction	Distance
Exit Service stop and turn <b>left</b> onto Oxford Rd toward Old S Rd	190m
Turn <b>right</b> at the 1st cross street onto Old S Rd	220m
At the roundabout, take the <b>1st exit</b> onto SH 45	750m
Slight <b>left</b> toward South Rd/SH 45	110m
Continue <b>straight</b> onto South Rd/SH 45	4.2km
Turn <b>left</b> onto Mid Puniho Rd/Puniho Rd	8.7km
Turn <b>right</b> onto Wiremu Rd	24.1km
<b>Continue</b> onto Opunake Rd	2.2km
Turn <b>left</b> onto Auroa Rd	170m
<b>Continue</b> onto Celia St	21km
Turn <b>left</b> onto SH 3	1.6k
At the roundabout, take the <b>1st exit</b> onto Fenton St	450m
Turn <b>right</b> onto Portia St	130m
The Stratford War Memorial Centre will be on the <b>right</b> .	130m


## LUNCH & SERVICE

### Stratford War Memorial Centre



<b>Service Stop:</b>	Stratford War Memorial Centre
<b>Date:</b>	Friday 27 <sup>th</sup> May
<b>Service Time Allowable</b>	60 minutes
<b>First Car Due (approx):</b>	11:55 am
<b>Facilities</b>	Toilets available
<b>Service Park Surface:</b>	Asphalt

Scan in with the NZ COVID Tracer app  
Matawaitia te QR Code



Stratford Service  
Stratford War Memorial Carpark, 55 Miranda St, Stratford

Scanning protects what you love  
Tiaki ōku taonga

Covid19.govt.nz

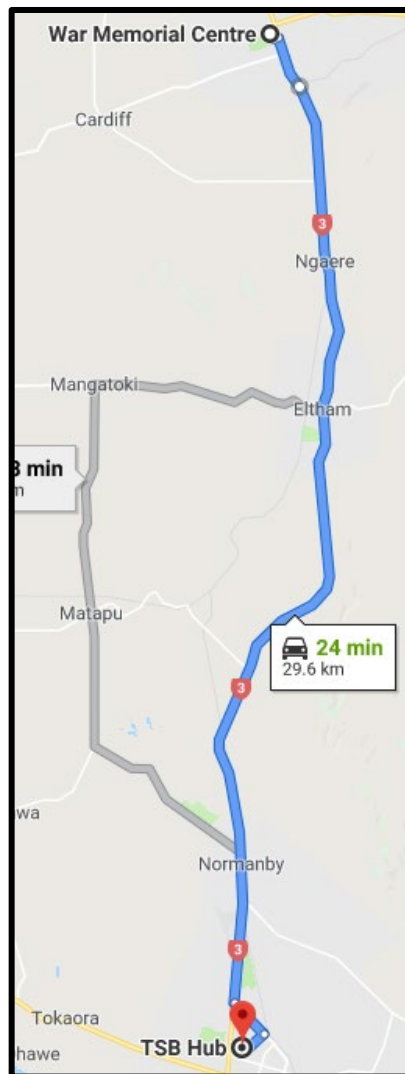
Te Kōwhiriwhiri o Aotearoa  
New Zealand Government

Mā tātau  
katoa e  
ārai atu te  
COVID-19

MINISTRY OF  
HEALTH

## TOURING

### Stratford War Memorial Centre to TSB Hub Carpark, Hawera



Total Distance:	29.6 km
Estimated Travel Time:	24 min

Instruction	Distance
Exit Service stop and turn <b>left</b> onto Portia St toward Fenton St	130m
Turn <b>left</b> onto Fenton St	130m
At the roundabout, take the <b>3rd exit</b> onto SH 3	110m
At the roundabout, take the <b>1st exit</b> onto Glover Rd	27.5km
Turn <b>right</b> onto Camberwell Rd	1.1km
The TSB Hub will be on your <b>right</b>	650m



## SERVICE


### TSB Hub Carpark, Hawera



**“Service Area A”** is the preferred servicing area.  
Once full, overflow to **“Service Area B”**.

Service Stop:	TSB Hub Car Park
Date:	Friday 27 <sup>th</sup> May
Service Time Allowable	20 minutes
First Car Due (approx):	1:20 pm
Facilities	Toilets available
Service Park Surface:	Asphalt

Scan in with the NZ COVID Tracer app  
Matawaitia te QR Code



Hawera Service  
TSB Hub Carpark, Camberwell Rd, Hawera

Scanning protects what you love  
Tiaki ōku taonga

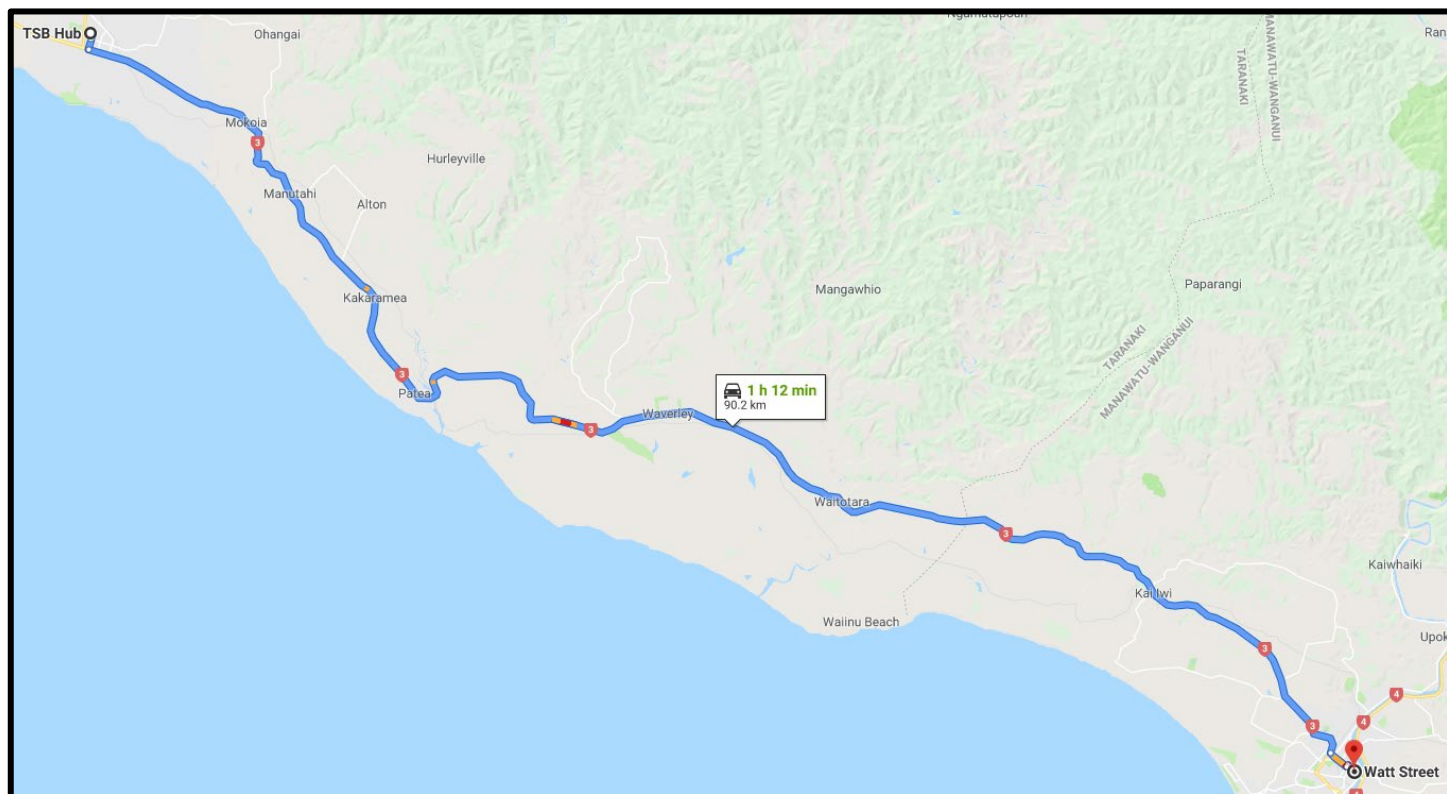
Covid19.govt.nz  
Te Kāwanatanga o Aotearoa  
New Zealand Government

Mā tātau  
kātoā e  
ārai atu te  
COVID-19

MINISTRY OF  
HEALTH  
MANATU HIRAKA

## TOURING

### TSB Hub Carpark, Hawera to Watt Street, Whanganui



Total Distance:	90.2 km
Estimated Travel Time:	1h 12 min

Instruction	Distance
Drive through carpark and exit TSB Hub, turn <b>left</b> onto SH 3	
Continue on SH 3	87.9km
Turn <b>left</b> onto Victoria Ave	1.1km
Turn <b>left</b> onto Ingestre St	120m
Turn <b>right</b> at the 1st cross street onto Wicksteed St	300m
Slight <b>right</b> to stay on Wicksteed St	23m
Slight <b>right</b> onto Cameron Terrace	52m
<b>Continue</b> onto Watt St	110m

## END OF LEG SERVICE & PARC FERME


### Whanganui



Service along Watt Street or around Queens Park

<b>Service Stop:</b>	Watt St Whanganui
<b>Date:</b>	Friday 27 <sup>th</sup> May
<b>Service Time Allowable</b>	60 minutes
<b>First Car Due (approx):</b>	4:50 pm
<b>Facilities</b>	Toilets available
<b>Service Park Surface:</b>	Asphalt

Scan in with the NZ COVID Tracer app  
Matawaihia te QR Code



Whanganui  
Whanganui War Memorial Carpark, Watt St, Whanganui

Scanning protects what you love  
Tiaki ōku taonga

Covid19.govt.nz  
Te Kaitiaki o Aotearoa  
New Zealand Government

Mā tātāu  
katoa e  
ārahi atu to  
COVID-19

MINISTRY OF  
HEALTH  
MANATĀHI HAUORA



# Saturday 28<sup>th</sup> May

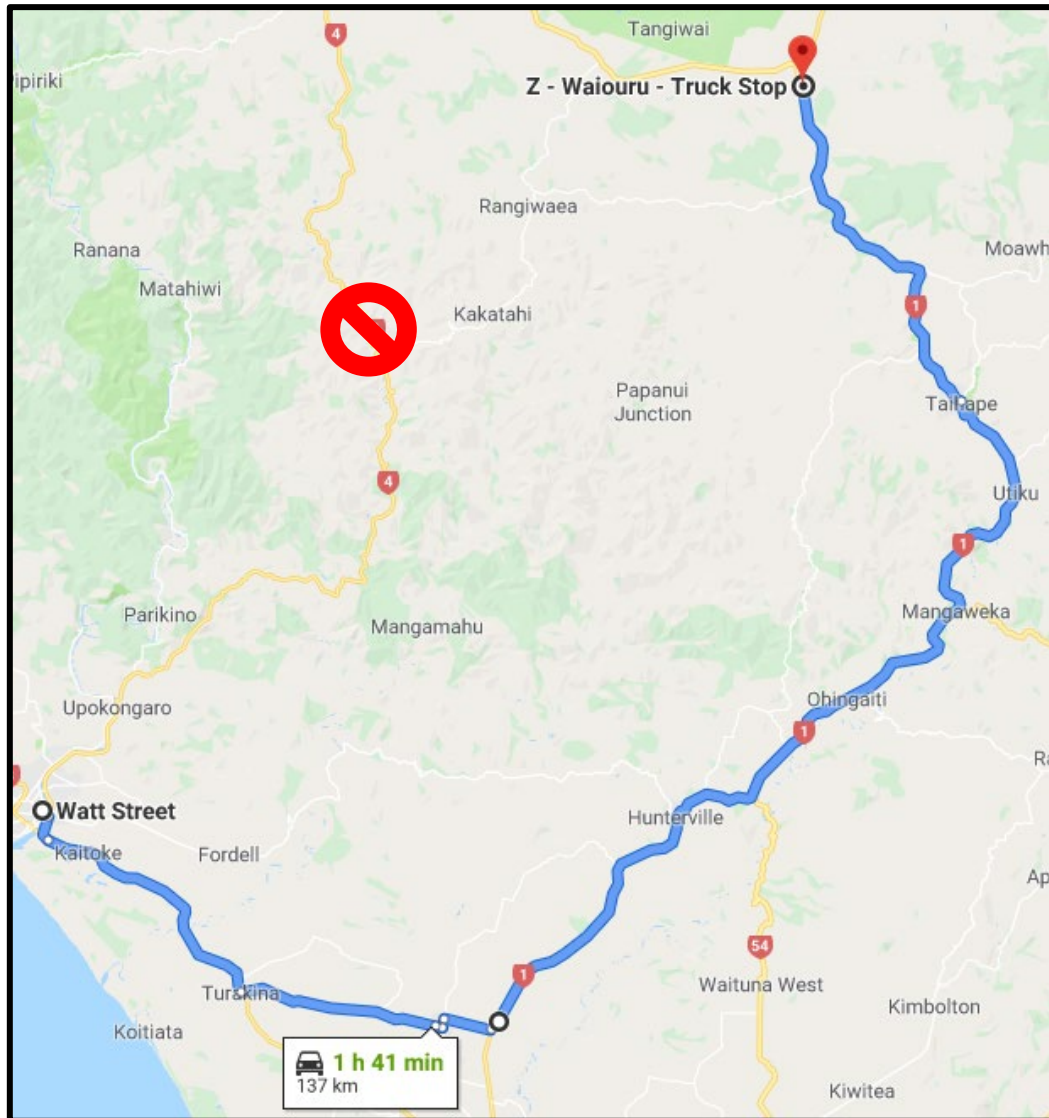
## LEG 4

LEG 4 SATURDAY 28 MAY 2022									
STAGE	Stage Name	Stage Kms.	Touring Kms.	Total Distance	Average Speed	Target time	First Car Due		Road Closures
	Distance to next refuel	26.86	78.93	105.79					
TC19C	Leg 4 Start	Whanganui War Memorial Centre					8:00		
			55.64	55.64	60.70	0:55			
SS 20	FIELDS TRACK	26.86					9:00		7:45am - 12:15pm
	Service - WAIOURU- 15mins		31.30	58.16	63.45	1:10			
	Distance to next refuel	31.94	19.59	51.53					
SS 21	WAIOURU	11.72					10:15		9:00am - 1:30pm
			5.08	16.80	67.20	0:15			
SS 22	MATAROA	20.22					10:35		9:20am - 1:50pm
			6.50	26.72	64.13	0:25			
TC 22A	Lunch - TAIHAPE						11:00		
TC 22B	Service - 75mins						12:15		
	Distance to next refuel	25.82	11.75	37.57					
			10.72	10.72	64.32	0:10			
SS 23	GENTLE ANNIE 1	25.82					12:30		11:00am - 4:30pm
	Roadside Refuel - 3mins		1.20	27.02	73.69	0:25			
	Distance to next refuel	28.49	0.58	29.07					
SS 24	GENTLE ANNIE 2	28.49					13:00		11:00am - 4:30pm
	Roadside Refuel - 3mins		1.01	29.50	80.45	0:25			
	Distance to next refuel	29.69	36.86	66.55					
SS 25	GENTLE ANNIE 3	29.69					13:30		11:00am - 4:30pm
	Roadside Refuel - 3mins		57.73	87.42	63.97	1:25			
	Distance to next refuel	0.00	21.47	21.47					
TC25A	Service - Havelock North - 120 mins		0.19	0.19	0.09	2:03	14:55		
TC 25B	PARC FERME Martin Place, Havelock North						16:58		
	Totals	142.80	169.37	312.17					

Please remember if you want fuel transported to the Roadside refuels to deliver these to the nominated place and time at the Start of Leg.

## TOURING

### Watt Street, Whanganui to Waioruru



<b>Total Distance:</b>	<b>137 km</b>
<b>Estimated Travel Time:</b>	<b>1 hour 41 min</b>
Instruction	Distance
Take Watt St, Ridgway St, Victoria Ave and Whanganui City Bridge to SH 4 in Durie Hill	800m
Follow State Highway 3 to Wanganui Rd in Turakina	21 km
Continue on Wanganui Rd to Marton	18.5 km
Follow State Highway 1 to Waioruru	96.8 km
Your destination will be on the left	



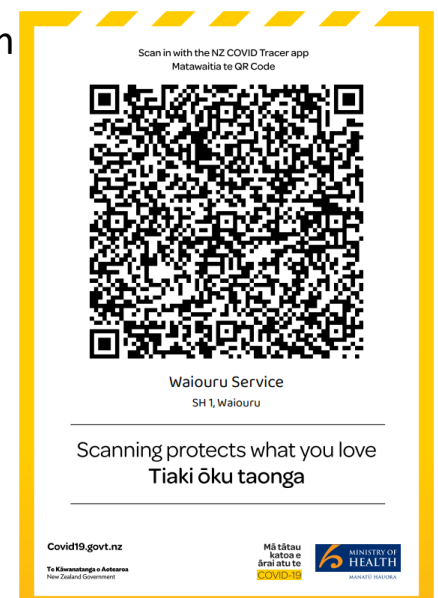
## SERVICE

### Waioruru (Roadside)



Service anywhere in Waioruru. Service ends at the Museum  
Be aware of public traffic

<b>Service Stop:</b>	Waioruru Roadside Service
<b>Date:</b>	Saturday 28 <sup>th</sup> May
<b>Service Time Allowable</b>	15 minutes
<b>First Car Due (approx):</b>	9:40 am
<b>Facilities</b>	Toilets available
<b>Service Park Surface:</b>	Asphalt

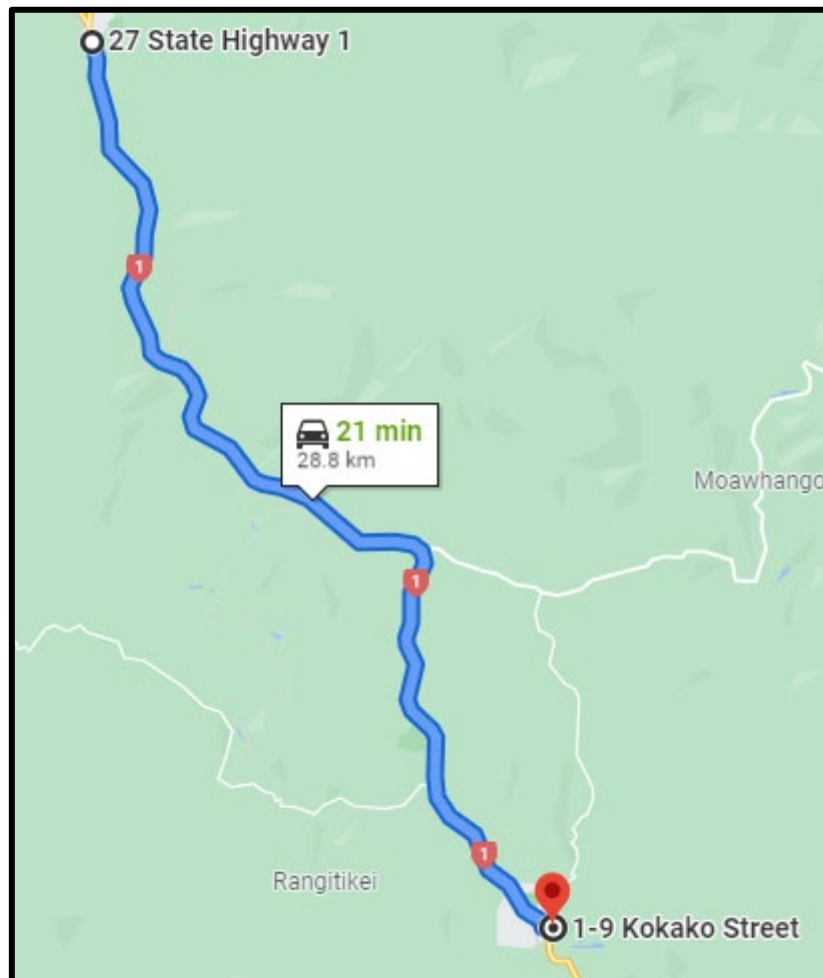


---

## TOURING

### Waiouru to Taihape

---



Total Distance:	28.8 km
Estimated Travel Time:	21 min
Instruction	Distance
Head <b>south</b> on SH 1	28.4km
Turn <b>left</b> onto Tui St	220m
Turn <b>right</b> onto Kokako St	120m

## SERVICE

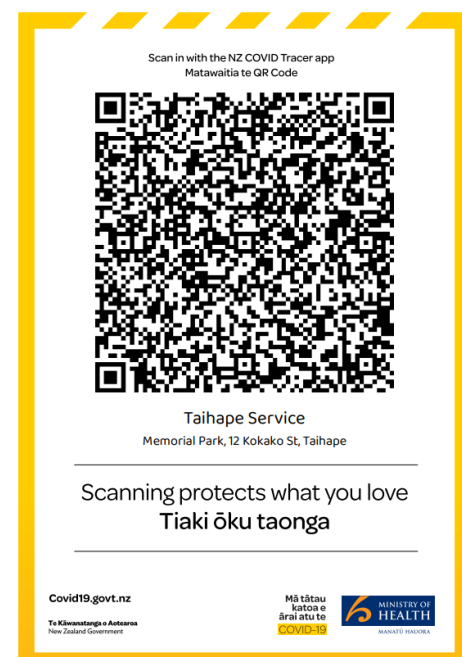
### Kokako Street, Taihape



Service Stop:	Kokako St, Taihape
Date:	Saturday 28 <sup>th</sup> May
Service Time Allowable	75 minutes
First Car Due (approx):	11:00 am
Facilities	Toilets available
Service Park Surface:	Asphalt

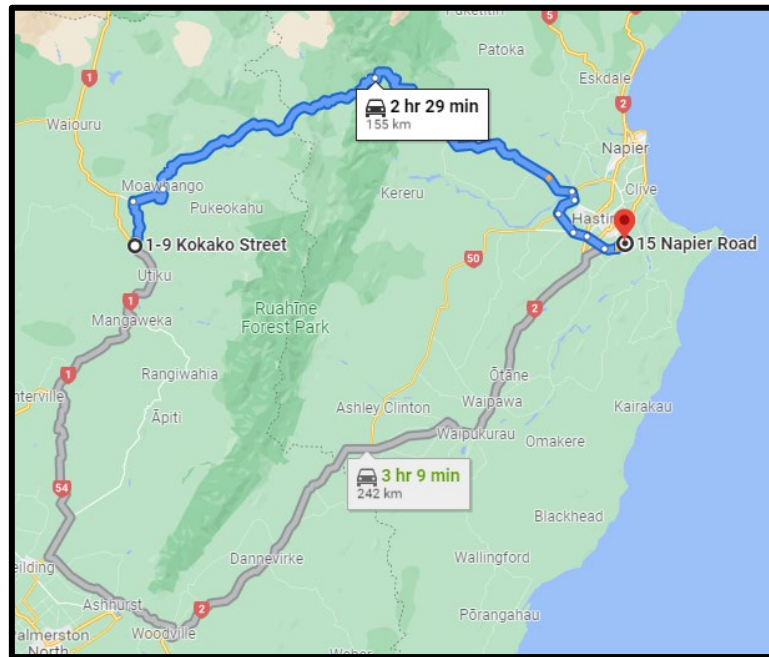
From here the 'fastest' route is to follow the Rally over the Gentle Annes. This shown below in **blue**.

There is an alternate route (**grey**) that will get you to Havelock North slightly quicker than waiting for the road to open, but this will take you away from the stages.



## TOURING

### Kokako Street, Taihape to Napier Rd, Havelock North



<b>Total Distance:</b>	<b>155 km</b>
<b>Estimated Travel Time:</b>	<b>2 hr 29 min</b>

Instruction	Distance
Head on Kokako St toward Huia St	
Turn <b>right</b> onto Huia St	850m
Turn <b>right</b> onto Hautapu St	800m
Continue onto Spooners Hill Rd	8.6km
Turn <b>right</b> onto Te Moehau Rd (signs for Napier) <b>Road closure starts here</b>	8.4km
Follow Te Moehau & Taihape-Napier Rd	115.10km
Turn <b>right</b> onto SH 50 (signs for Hastings)	1.8km
Turn <b>right</b> to stay on SH 50 (signs for SH 50 / Tikokino / Wellington)	4.1km
Turn <b>left</b> onto Ngatarawa Rd (signs for Pottery / Wineries / Aerodrome)	4.7km
Turn <b>left</b> onto Maraekakaho Rd (signs for Hastings)	2.5km
At the roundabout, take the <b>3<sup>rd</sup></b> exit onto Longlands Rd W	4.1km
Continue onto Te Aute Rd (signs for Havelock North)	4.2km
At the roundabout, take the <b>2<sup>nd</sup></b> exit onto Napier Rd	170m
Service from Porter Dr to Karanema Dr	



## SERVICE


Napier Rd, Havelock North



Roadside service anywhere between Porter Dr & Karanema Dr

<b>Service Stop:</b>	Napier Rd, Havelock North
<b>Date:</b>	Saturday 28 <sup>th</sup> May
<b>Service Time Allowable</b>	120 minutes
<b>First Car Due (approx):</b>	2:55 pm
<b>Facilities</b>	Public Toilets available (I-Site Havelock North)
<b>Service Park Surface:</b>	Asphalt

Scan in with the NZ COVID Tracer app  
Matawaitia te QR Code




Havelock North Service  
17 Napier Road, Havelock North

Scanning protects what you love  
Tiaki ōku taonga

Covid19.govt.nz  
Te Kōwhiri a Aotearoa  
New Zealand Government

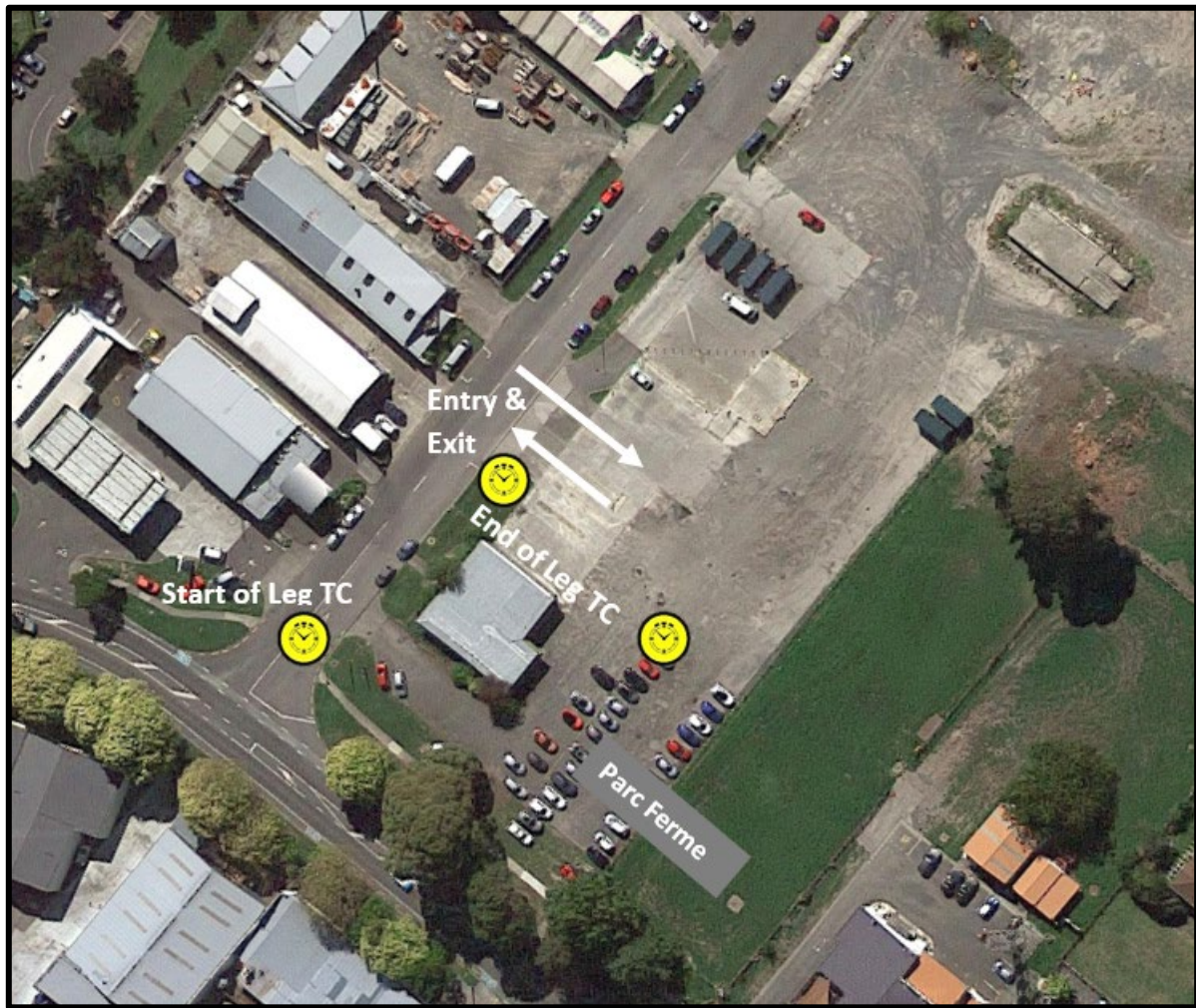
Mā tōtau  
hāora e  
ārai atu te  
COVID-19






# END OF LEG PARC FERME

## Martin Place, Havelock North



Scan in with the NZ COVID Tracer app  
Matawaitia te QR Code




Martin Place Service  
4 Martin Pl, Havelock North

Scanning protects what you love  
Tiaki ōku taonga

Covid19.govt.nz  
Te Kāwanatanga o Aotearoa  
New Zealand Government

Mā tātau  
katoa e  
ārai atu te  
COVID-19



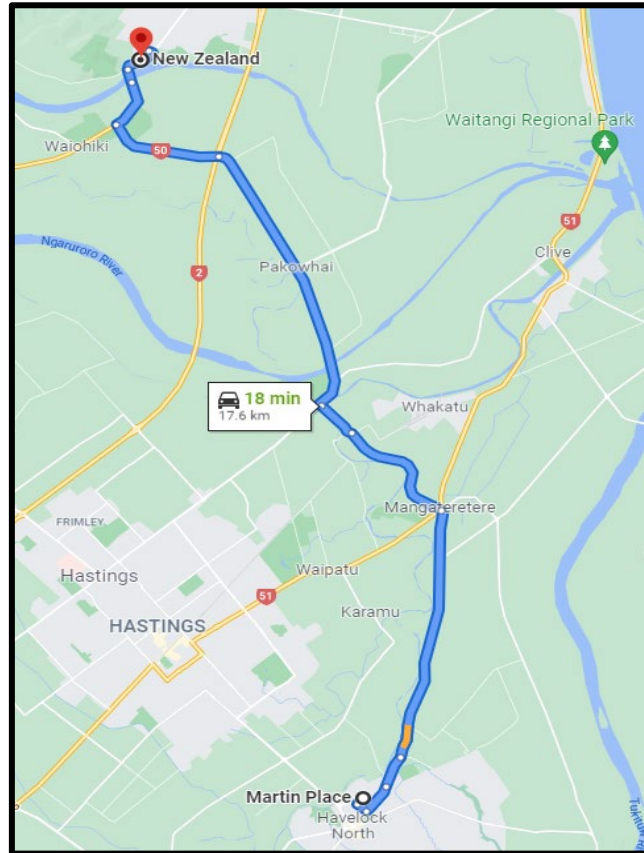
# Sunday 29<sup>th</sup> May

## LEG 5

LEG 5 SUNDAY 29 MAY 2022									
STAGE	Stage Name	Stage Kms.	Touring Kms.	Total Distance	Average Speed	Target time	First Car Due		Road Closures
	Distance to next refuel	36.00	57.01	93.01					
TC25C	Leg 5 Start	Martin Place, Havelock North					8:00		
			24.76	24.76	59.42	0:25			
SS 26	CROWNTHORPE 1	36.00					8:30		7:15am - 3:05pm
	Service - TARADALE- 15mins		56.07	92.07	64.99	1:40			
	Distance to next refuel	26.89	59.76	86.65					
SS 27	HEDGELEY	26.89					10:15		9:00am - 1:30pm
	Service - TARADALE- 15mins		47.24	74.13	59.30	1:30			
	Distance to next refuel	36.00	57.01	93.01					
SS 28	CROWNTHORPE 2	36.00					11:50		7:15am - 3:05pm
			45.52	81.52	69.87	1:10			
TC 28A	Lunch - MARTIN PLACE						13:00		
TC 28B	Service - 60mins						14:00		
	Distance to next refuel	37.33	41.31	78.64					
			24.93	24.93	59.83	0:25			
SS 29	RAUKAWA	37.33					14:30		1:15pm - 5:45pm
	Service - WAIPAWA ROADSIDE - 15mins		19.83	57.16	68.59	1:05			
	Distance to next refuel	36.71	8.68	45.39					
SS 30	STAGE CANCELLED	0.00							
			0.00	0.00					
SS 31	TOD/MIDDLE RD	36.71					15:40		2:10pm - 6:40pm
			5.23	41.94	62.91	0:40			
TC 31A	END OF EVENT - HAVELOCK NORTH						16:20		
	Totals	172.93	223.58	396.51					
	Event Totals	759.25	1240.74	1999.99					

## TOURING

### Martin Place to EIT Hawkes Bay



<b>Total Distance:</b>	<b>17.6 km</b>
<b>Estimated Travel Time:</b>	<b>18 min</b>
Instruction	Distance
Turn <b>left</b> onto Martin Pl toward Karanema Dr	140m
Turn <b>left</b> onto Karanema Dr	190m
At the roundabout, take the <b>1<sup>st</sup></b> exit onto Napier Rd	550m
Keep <b>right</b> to stay on Napier Rd	550m
At the roundabout, take the <b>1<sup>st</sup></b> exit and stay on Napier Rd	4.5km
At the roundabout, take the <b>2<sup>nd</sup></b> exit onto Te Ara Kahikatea heading to Airport / SH 2 / Whakatu / Napier	2.2km
At the roundabout, take the <b>2<sup>nd</sup></b> exit and stay on Te Ara Kahikatea	700m
At the roundabout, take the <b>3<sup>rd</sup></b> exit onto Pakowhai Rd	5km
At the roundabout, take the <b>2<sup>nd</sup></b> exit onto SH 50	1.9km
Turn <b>right</b> onto Waiohiki Rd (signs for Taradale / EIT / Waiohiki Marae)	850m
Continue onto Redclyffe Bridge	250m
Continue onto Gloucester St	500m
Turn <b>left</b>	53m
At the roundabout, take the <b>1<sup>st</sup></b> exit	140m
Slight right and Service in the car park	93m



## SERVICE


### EIT Hawkes Bay



<b>Service Stop:</b>	EIT Hawkes Bay, Taradale
<b>Date:</b>	Sunday 29 <sup>th</sup> May
<b>Service Time Allowable</b>	15 minutes
<b>First Car Due (approx):</b>	9:30 am
<b>Facilities</b>	Toilets available
<b>Service Park Surface:</b>	Asphalt

<b>Service Stop:</b>	EIT Hawkes Bay, Taradale
<b>Date:</b>	Sunday 29 <sup>th</sup> May
<b>Service Time Allowable</b>	15 minutes
<b>First Car Due (approx):</b>	11:05 am
<b>Facilities</b>	Toilets available
<b>Service Park Surface:</b>	Asphalt

Scan in with the NZ COVID Tracer app  
Matawaitia te QR Code



Taradale Service  
EIT Hawkes Bay, 501 Gloucester St, Taradale

Scanning protects what you love  
Tiaki ōku taonga

Covid19.govt.nz

Te Kōwhiriwhiri o Aotearoa  
New Zealand Government

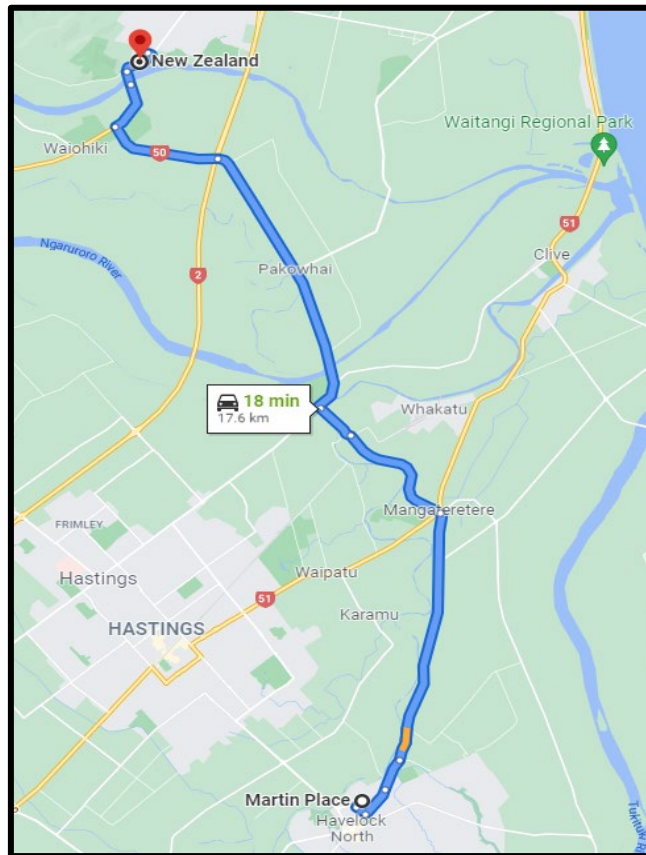
Mā tātau  
katoa e  
ārai atu te  
COVID-19

MINISTRY OF  
HEALTH

MANATU WHAKATANGA

## TOURING

### EIT Hawkes Bay to Martin Place



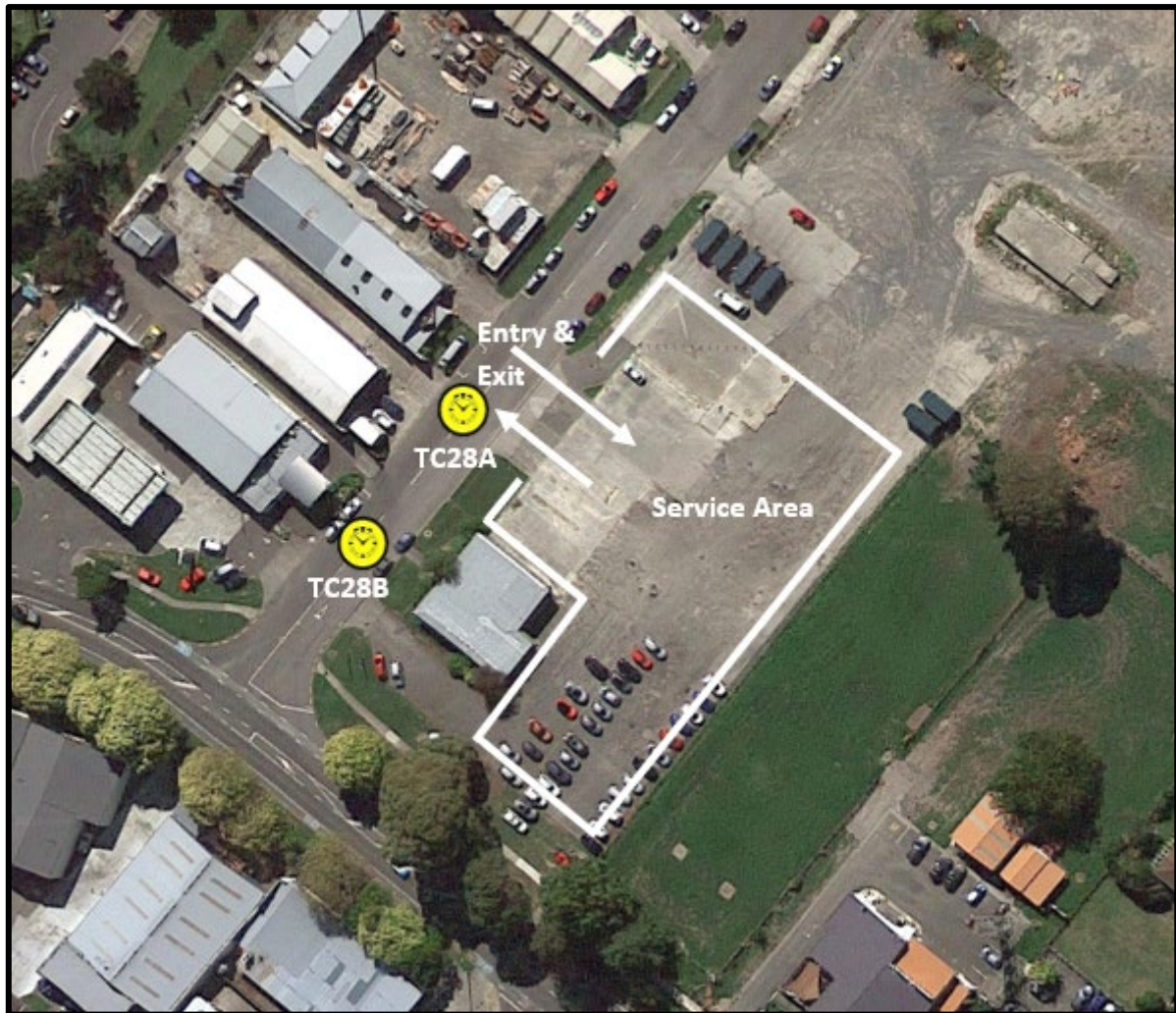
<b>Total Distance:</b>	<b>17.6 km</b>
<b>Estimated Travel Time:</b>	<b>18 min</b>

Instruction	Distance
Head towards the entry point of Service stop	240m
At the roundabout, take the <b>3<sup>rd</sup></b> exit	80m
Turn <b>right</b> onto Gloucester St	550m
Continue onto Redclyffe Bridge	250m
Continue onto Waiohiki Rd	850m
Turn <b>left</b> onto Links Rd / SH 50 (signs for Silky Oak Chocolate Factory / Café & Chocolate Museum / SH 50 / Napier / Hastings)	1.8km
At the roundabout, take the <b>2<sup>nd</sup></b> exit onto Pakowhai Rd	5km
At the roundabout, take the <b>1<sup>st</sup></b> exit onto Te Ara Kahikatea	600m
At the roundabout, take the <b>2<sup>nd</sup></b> exit and stay on Te Ara Kahikatea	2.3km
At the roundabout, take the <b>3<sup>rd</sup></b> exit onto Napier Rd heading to Havelock North	4.6km
At the roundabout, take the <b>2<sup>nd</sup></b> exit and stay on Napier Rd	1.2km
At the roundabout, take the <b>3<sup>rd</sup></b> exit onto Karanema Dr	230m
Turn <b>right</b> onto Martin Place	140m




## LUNCH & SERVICE

### Martin Place, Havelock North



<b>Service Stop:</b>	Martin Place, Havelock North
<b>Date:</b>	Sunday 29 <sup>th</sup> May
<b>Service Time Allowable</b>	60 minutes
<b>First Car Due (approx):</b>	1:00 pm
<b>Facilities</b>	Toilets available in Park 150m away
<b>Service Park Surface:</b>	Concrete with some gravel, Grass if needed

Scan in with the NZ COVID Tracer app  
Matawaitia te QR Code




Martin Place Service  
4 Martin Pl, Havelock North

Scanning protects what you love  
Tiaki ōku taonga

Covid19.govt.nz  
Te Kāwanatanga o Aotearoa  
New Zealand Government

Mā tātatau  
kātia e  
ārai iho te  
COVID-19



## TOURING

### Martin Place to Waipawa Roadside



<b>Total Distance:</b>	<b>44.9 km</b>
<b>Estimated Travel Time:</b>	<b>33 minutes</b>
<b>Instruction</b>	<b>Distance</b>
Turn <b>left</b> onto Martin Pl toward Karanema Dr	140m
Turn <b>right</b> onto Karanema Dr	280m
At the roundabout, take the <b>2<sup>nd</sup></b> exit onto Havelock Rd heading to Hastings	1.2km
At the roundabout, take the <b>1<sup>st</sup></b> exit onto St Georges Rd	3.2km
Turn <b>right</b> onto Te Aute Rd	850m
Turn <b>left</b> to stay on Te Aute Rd	3.8km
At the roundabout, take the <b>1<sup>st</sup></b> exit onto SH 2 heading to Wellington / Waipukurau	34.9km
Turn <b>left</b> onto Victoria St	100m
Turn <b>right</b> onto Harker St	63m
Entry to School through gates on the <b>left</b>	110m


## SERVICE

### Waipawa Roadside



	Waipawa Roadside
<b>Date:</b>	Sunday 29 <sup>th</sup> May
<b>Service Time Allowable</b>	15 minutes
<b>First Car Due (approx):</b>	3:00 pm
<b>Facilities</b>	Public Toilets on Islington Dr, Waipawa
<b>Service Park Surface:</b>	Asphalt

Scan in with the NZ COVID Tracer app  
Matawaitia te QR Code




Waipawa Service  
Waipawa School, 6 Harker St, Waipawa

Scanning protects what you love  
Tiaki ōku taonga

Covid19.govt.nz  
Te Kāwanatanga o Aotearoa  
New Zealand Government

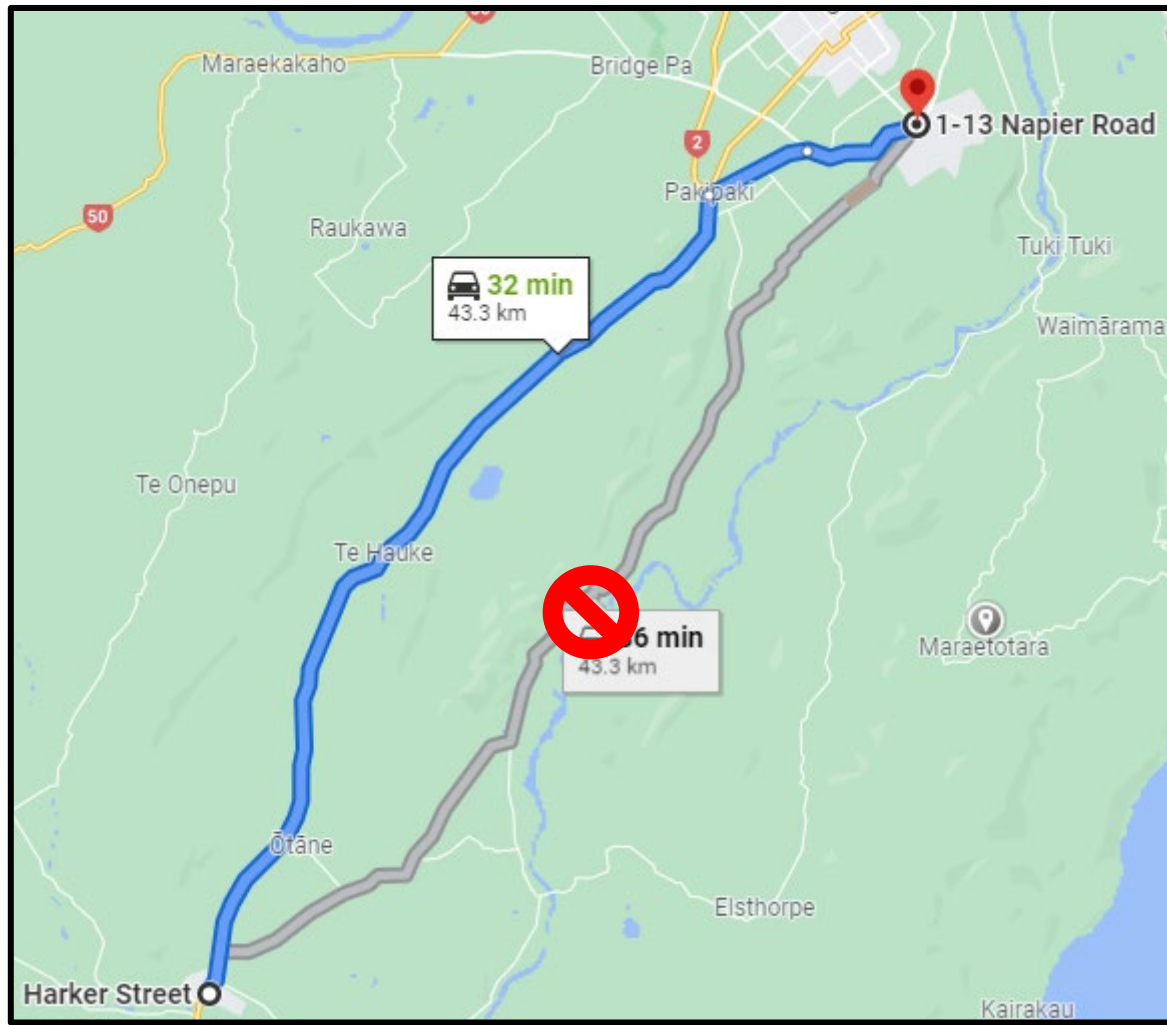
Mā tātau  
katoa e  
ārai atu te  
COVID-19





## TOURING TO THE END OF EVENT

### Waipawa School to Napier Rd, Havelock North



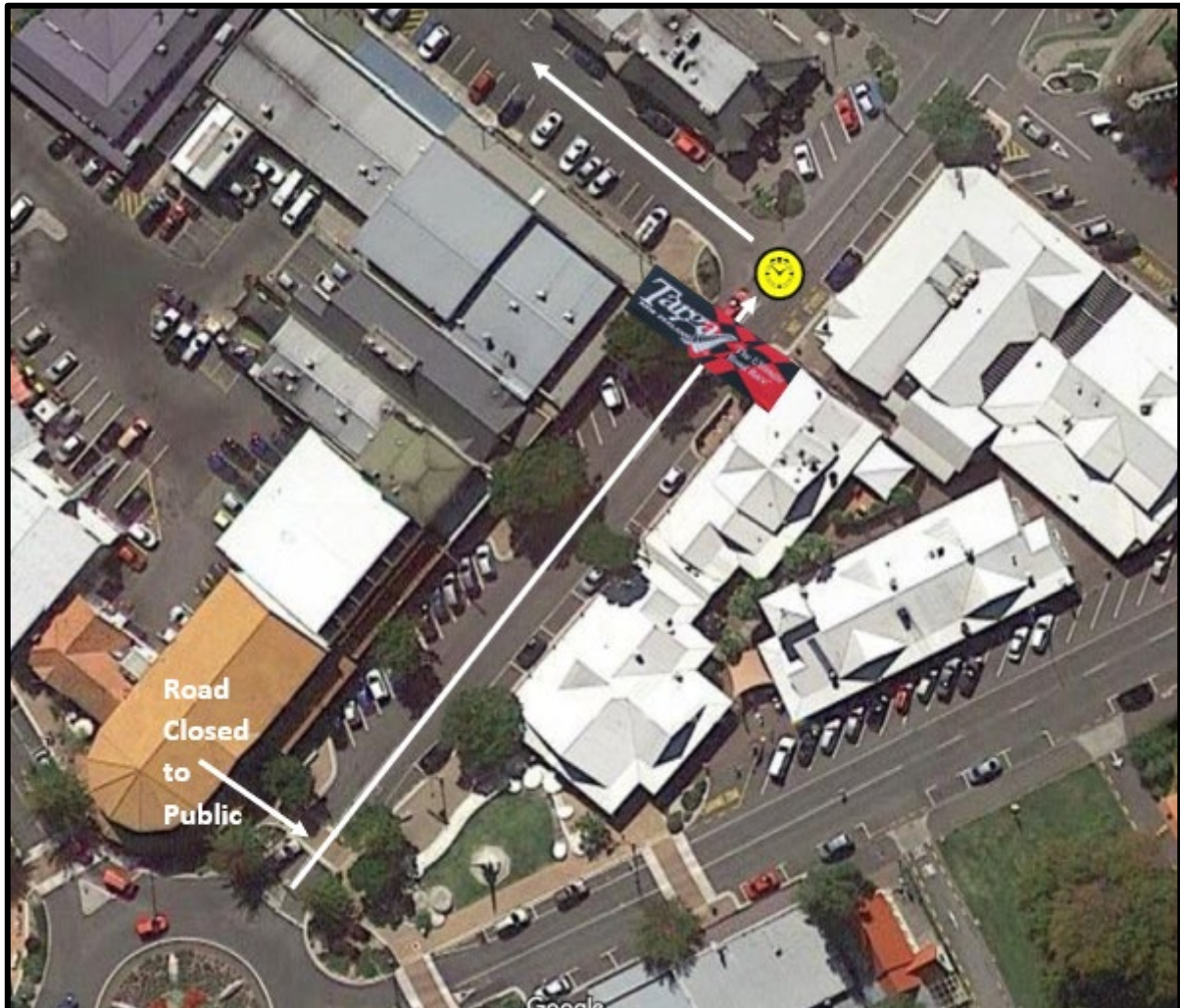
<b>Total Distance:</b>	<b>43.3 km</b>
<b>Estimated Travel Time:</b>	<b>32 minutes</b>
<b>Instruction</b>	<b>Distance</b>
Turn <b>right</b> onto Harker St toward Victoria St	63m
Turn <b>left</b> onto Victoria St	100m
Turn <b>right</b> onto SH 2	34.9km
At the roundabout, take the <b>3<sup>rd</sup></b> exit onto Te Aute Rd heading to Havelock N	3.9km
Turn <b>right</b> to stay on Te Aute Rd	4.2km
At the roundabout, take the <b>2<sup>nd</sup></b> exit onto Napier Rd	140m
End of Event located outside Diva Bar & Eatery	

---

# END OF EVENT

## Napier Rd, Havelock North

---



We hope you have enjoyed this year's Targa event; we look forward to seeing you in the South Island



Scan in with the NZ COVID Tracer app  
Matawaitia te QR Code



End of Event  
10 Napier Road, Havelock North

Scanning protects what you love  
Tiaki ōku taonga

Covid19.govt.nz  
Te Kōwhiriwhiri o Aotearoa  
New Zealand Government

Mā tātau  
katōa e  
ārai atu te  
COVID-19

